



FUTURE
MOBILITY HEALTHCARE INC.


CAPELLA

USER MANUAL



1 CONTACT INFORMATION

FUTURE MOBILITY HEALTHCARE INC. APPRECIATES YOUR FEEDBACK

Supplier: Please give this manual to the user of the wheelchair.

User: Please read this entire manual before using this wheelchair.

Thank you for choosing Future Mobility Healthcare Inc.

If you have any questions please do not hesitate to write or call us at the address and telephone number below:

Future Mobility Healthcare Inc.

Customer Service Canada

6750 Professional Court

Mississauga ON L4V 1X6

Phone: (888) 737-4011 or (905) 671-1661

Fax: (905) 671-3377

e-mail: orderdesk@futuremobility.ca

www.futuremobility.ca

TABLE OF CONTENTS

1 CONTACT INFORMATION	2
TABLE OF CONTENTS	3
2 NOTICE – READ BEFORE USE	5
CHOOSE THE CORRECT CHAIR AND OPTIONS	5
REVIEW THIS MANUAL OFTEN	5
WARNING	5
3 GENERAL	6
USER WEIGHT LIMIT	6
WEIGHT TRAINING	6
GETTING TO KNOW YOUR CHAIR	6
TO REDUCE THE RISK	6
SAFETY CHECKLIST	6
CHANGES AND ADJUSTMENTS	7
GROUND TERRAIN	7
CENTER OF GRAVITY	7
WHEELIES	7
ROLLING BACKWARDS	8
REACHING OR LEANING	8
RAMPS AND SLOPES	8
TRANSFERS	9
4 ATTENDANT WARNINGS	9
TILTING THE WHEELCHAIR	9
DESCENDING A CURB	10
CLIMBING A CURB	10
DESCENDING STAIRS	10

5 COMPONENT WARNINGS	11
ANTI-TIP WHEELS	11
ARMRESTS	11
BACK CANES	11
FASTENERS	11
FOOTRESTS	12
POSITIONING BELTS	12
QUICK-RELEASE AXLES	12
REAR WHEEL AXLES	13
REAR WHEEL LOCKS	13
FEATURES	14
SAFETY INSPECTION CHECKLIST	15
TROUBLESHOOTING	17
LABELS	18
SERVICE AND REPAIR	19
TIRE SIZE	20
6 TILT MECHANISM	21
ACTIVATING THE TILT MECHANISM [FIGURE 1]	21
7 T-STYLE FIXED ARM RESTS	22
INSTALLING AND REMOVING T-STYLE FIXED ARMREST [FIGURE 2]	22
8 T-STYLE ARM RESTS HEIGHT ADJUSTABLE	23
ADJUSTING T-STYLE ARM HEIGHT [FIGURE 3]	23
.....	23
9 FLIP-UP ARM RESTS	24
ENGAGING AND DISENGAGING FLIP-UP STYLE ARMREST [FIGURE 4]	24
10 FOOTREST UPGRADED DUAL SWINGAWAY	25
INSTALLING FOOTREST UPGRADED DUAL SWINGAWAY [FIGURE 5]	25
FOOTPLATE LENGTH ADJUSTMENT	25

11 ELEVATING FOOTREST UPGRADED DUAL SWINGAWAY 26	
INSTALLING FOOTREST UPGRADED DUAL SWINGAWAY [FIGURE 6].....	26
FOOTPLATE LENGTH ADJUSTMENT.....	26
CHANGING ANGLE OF ELEVATING LEGREST.....	26
12 CHAIR BACK..... 27	
ADJUSTING FIXED BACK ANGLE [FIGURE 7].....	27
TO FOLD DOWN THE BACK.....	28
13 SEAT WIDTH AND DEPTH 29	
CHANGING SEAT WIDTH [FIGURE 9, FIGURE 10, FIGURE 11].....	29
CHANGING SEAT DEPTH (CAPELLA 45) [FIGURE 13].....	32
14 REAR WHEELS 33	
CHANGING HORIZONTAL LOCATION OF REAR WHEELS [FIGURE 14].....	33
CHANGING VERTICAL LOCATION OF REAR WHEELS.....	33
REMOVING/INSTALLING REAR WHEELS [FIGURE 15].....	34
15 WHEEL LOCKS..... 36	
USING THE WHEEL LOCKS [FIGURE 17].....	36
ADJUSTING THE PATIENT OPERATED WHEEL LOCKS [FIGURE 18].....	36
16 FRONT CASTERS..... 38	
REPLACING/INSTALLING FRONT CASTERS [FIGURE 19].....	38
REPLACING/INSTALLING FRONT FORKS [FIGURE 20].....	39
REPLACING/INSTALLING FRONT FORK ASSEMBLY [FIGURE 21, FIGURE 22].....	40
17 SEAT TO FLOOR..... 41	
18 ANTI-TIPPERS..... 44	
INSTALLING/ADJUSTING THE ANTI-TIPPERS.....	44
INSTALLING ANTI-TIPPERS [FIGURE 25].....	45
CHANGING VERTICAL LOCATION OF REAR WHEELS [FIGURE 26].....	45
19 MAINTENANCE 46	
GENERAL MAINTENANCE.....	46

SERVICE AND REPAIR.....	46
CLEANING YOUR CHAIR.....	46
20 WARRANTY..... 48	
LIFETIME.....	48
FOR TWO (2) YEARS.....	48
FOR (90) DAYS.....	48
LIMITATIONS.....	49
WARRANTY PROCEDURES.....	49

2 NOTICE – READ BEFORE USE

CHOOSE THE CORRECT CHAIR AND OPTIONS

Future Mobility Healthcare Inc. provides a choice of many wheelchair styles to meet the requirements of the wheelchair user. However, the final selection of the wheelchair and its options rests solely with you and your health care advisor. Choosing the best chair will depend on such things as:

1. The level of your disability, strength, balance and coordination.
2. The places and terrain that you are likely to use your chair.
3. The need for options for your safety and comfort (such as anti-tip tubes, positioning belts, or special seating systems).

REVIEW THIS MANUAL OFTEN

Before using this chair you, and each person who may assist you, should read this entire manual and make sure to follow all instructions. Review the warnings often.

WARNING

The term **“WARNING”** are hazards or unsafe practices that may cause **severe injury or death** to you or to other persons.

3 **General**

USER WEIGHT LIMIT



NEVER exceed the weight limit of 250 pounds for a combined weight of rider and items carried. If you do exceed the limit, damage to your chair, tip-over or loss of control may occur and cause severe injury to the rider or others.

WEIGHT TRAINING



NEVER use this chair for weight training if total weight (rider plus equipment) exceeds 250 pounds. If you do exceed the limit, damage to your chair, tip-over or loss of control may occur and cause severe injury to the rider or others.

GETTING TO KNOW YOUR CHAIR



Every wheelchair is different. Take the time to learn the feel of this chair before you begin riding. Start slowly, with easy, smooth strokes. If you are used to a different chair, you may use too much force and tip over. If you use too much force, damage to your chair, a fall, tip over or loss of control may occur and cause severe injury to the rider or others.

TO REDUCE THE RISK



1. BEFORE riding, you should be trained in the safe use of this chair by your health care advisor.
2. Practice bending, reaching and transfers until you know the limit of your ability. Have someone help you until you know what can cause a fall or tip-over and how to avoid doing so.
3. Be aware that you must develop your own methods for safe use best suited to your level of function and ability.
4. NEVER try a new maneuver on your own until you are sure you can do it safely.
5. Get to know the areas where you plan to use your chair. Look for hazards and learn how to avoid them.
6. Use anti-tip tubes unless you are a skilled rider of this chair and are sure you are not at risk to tip over.

SAFETY CHECKLIST



Before each use of your chair:

1. Make sure the chair rolls easily and that all parts work smoothly. Check for noise, vibration, or a change in ease of use. (They may indicate low tire pressure, loose fasteners, or damage to your chair).
2. Repair any problem. Your authorized supplier can help you find and correct the problem.

3. Check to see that both quick-release rear axles are locked. When locked, the axle button will “pop out” fully.

CHANGES AND ADJUSTMENTS



1. If you modify or adjust this chair, it may increase the risk of a tip-over UNLESS you make other changes as well.
 2. **Consult your authorized supplier BEFORE you modify or adjust your chair, or contact Future Mobility Healthcare.**
 3. We recommend that you use anti-tip tubes until you adapt to the change, and are sure you are not at risk to tip over.
 4. Unauthorized modifications or use of parts not supplied or approved by Future Mobility Healthcare may change the chair structure.
- A. This will void the warranty and may cause a safety hazard.

GROUND TERRAIN



1. Your chair is designed for use on firm, even surfaces such as concrete, asphalt and indoor floors and carpeting.
2. Do not operate your chair in sand, loose soil or over rough terrain. This may damage wheels or axles, or loosen fasteners of your chair.

CENTER OF GRAVITY



The point where this chair will tip forward, back, or to the side depends on its center of gravity and stability.

How your chair is set up, the options you select and the changes you make may affect the risk of a fall or tip-over.

1. The Most Important Adjustments Are:
 - a. The position of the rear wheels. The more you move the rear wheels forward, the more likely your chair will tip over backward.
 - b. The position of the carriage.
2. The Center Of Gravity Is Also Affected By:
 - a. A change in the set-up of your chair, including:
 - i. The seat height and seat angle.
 - ii. Backrest angle.
 - b. A change in your body position, posture or weight distribution.
 - c. Riding your chair on a ramp or slope.
 - d. The use of a back pack or other options, and the amount of added weight.

WHEELIES



Because of the ability to adjust the center of gravity and changes in center of gravity that will result from operating the tilt in space feature of this chair, as a user, do not perform wheelies in this wheelchair.

Doing a “wheelie” means: balancing on the rear wheels of your chair, while the front casters are in the air. It is dangerous to do a “wheelie” as a fall or tip-over may occur.

ROLLING BACKWARDS



**Use extra care when you move your chair backward.
Your chair is most stable when you propel yourself forward.
You may lose control or tip over if one of the rear wheels hits an object and stops rolling.**

1. Propel your chair slowly and smoothly.
2. If your chair has anti-tip tubes, make sure to lock them in place.
3. Stop often and check to be sure your path is clear.

REACHING OR LEANING



If you reach or lean it will affect the center of balance of your chair. This may cause you to fall or tip over. When in doubt, ask for help or use a device to extend your reach.

1. NEVER reach or lean if you must shift your weight sideways or rise up off the seat.
2. NEVER reach or lean if you must move forward in your seat to do so. Always keep your buttocks in contact with the backrest.
3. NEVER reach with both hands (you may not be able to catch yourself to prevent a fall if the chair tips).

4. NEVER reach or lean to the rear unless your chair has anti-tip tubes locked in place.
5. DO NOT reach or lean over the top of the seat back. This may damage one or both backrest tubes and cause you to fall.
6. If You Must Reach Or Lean:
 - a. Do not lock the rear wheels. This creates a tip point and makes a fall or tip-over more likely.
 - b. Do not put pressure on the footrests.
 - c. Move your chair as close as you can to the object you wish to reach.

RAMPS AND SLOPES



Riding on a slope, which includes a ramp or side hill, will change the center of balance of your chair. Your chair is less stable when it is at an angle. Anti-tip tubes may not prevent a fall or tip-over.

1. Do not use your chair on a slope steeper than 10%.
2. Always go as straight up and as straight down as you can. (Do not “cut the corner” on a slope or ramp.)
3. Do not turn or change direction on a slope.
4. Always stay in the CENTER of the ramp. Make sure ramp is wide enough that you are not at risk that a wheel may fall over the edge.
5. Do not stop on a steep slope. If you stop, you may lose control of your chair.

6. NEVER use rear wheel locks to try to slow or stop your chair. This is likely to cause your chair to veer out of control.
7. Beware Of:
 - a. Wet or slippery surfaces.
 - b. A change in grade on a slope (or a lip, bump or depression).
 - c. A drop-off at the bottom of a slope. A drop-off of as small as 3/4 inch can stop a front caster and cause the chair to tip forward.

TRANSFERS



WARNING

It is dangerous to transfer on your own. It requires good balance and agility. Be aware that there is a point during every transfer when the wheelchair seat is not below you. To Avoid A Fall:

1. Work with your health care advisor to learn safe methods.

4 ATTENDANT WARNINGS

TILTING THE WHEELCHAIR



WARNING

In preparation to operate the tilt:

1. Always verify that the arms of the rider are stable on the armrests or within the armrests.
2. Always verify that the legs of the rider are stable on the footrest/ legrest.
3. Never place hands, feet or foreign objects into the tilt mechanism.

- a. Learn how to position your body and how to support yourself during a transfer.
 - b. Have someone help you until you know how to do a safe transfer on your own.
2. Lock the rear wheels before you transfer. This keeps the rear wheels from rolling.
 3. Make sure to keep pneumatic tires properly inflated. Low tire pressure may allow the rear wheel locks to slip.
 4. Move your chair as close as you can to the seat you are transferring to. If possible, use a transfer board.
 5. Rotate the front casters until they are as far forward as possible.
 6. If you can, remove or swing footrests out of the way.
 - a. Make sure your feet do not catch in the space between the footrests.

Avoid putting weight on the footrests as this may cause the chair to tip.

4. Never push or propel the chair with the seat tilted in a forward position.
5. Never add chair accessories that are not specifically designed for the wheelchair.
6. Never exceed a tilted position that aligns the backrest parallel to the ground.

DESCENDING A CURB



Follow these steps to help a rider descend a curb or single step going **BACKWARD**:

1. Stay at the rear of the chair.
2. Several feet before you reach the edge of the curb or step, turn the chair around and pull it backward.
3. While looking over your shoulder, carefully step back until you are off the curb or stair and standing on the lower level.
4. Pull the chair toward you until the rear wheels reach the edge of the curb or step. Then allow the rear wheels to slowly roll down onto the lower level.
5. When the rear wheels are safely on the lower level, tilt the chair back to its balance point. This will lift the front casters off the curb or step.
6. Keep the chair in balance and take small steps backward.
7. Turn the chair around and gently lower front casters to the ground

CLIMBING A CURB



Follow these steps to help the rider climb a curb or single step going **FORWARD**:

1. Stay behind the chair.
2. Face the curb and tilt the chair up on the rear wheels so that the front casters clear the curb or step.
3. Move forward, placing the front casters on the upper level as soon as you are sure they are past the edge.
4. Continue forward until the rear wheels contact the face of the curb or step. Lift and roll the rear wheels to the upper level.

DESCENDING STAIRS



1. Use at least two attendants to move a chair and rider down stairs.
2. Move the chair and rider **FORWARD** down the stairs.
3. The person at the rear is in control. He or she tilts the chair to the balance point of the rear wheels and rolls it to the edge of the top step.
4. A second attendant stands on the third step from the top and grasps the hanger receiver or frontmost part of the seat rail. He or she lowers the chair one step at a time by letting the rear wheels roll over the stair edge.

The attendants move to the next stair down. Repeat for each stair, until you reach the landing.

5 **COMPONENT WARNINGS**

ANTI-TIP WHEELS



Anti-tip wheels can help keep your chair from tipping over backward in most normal conditions.

1. Future Mobility Healthcare Recommends Use Of Anti-Tip Tubes:
 - a. UNLESS you are a skilled rider of this chair and are sure you are not at risk to tip over.
 - b. Each time you modify or adjust your chair. The change may make it easier to tip backward. Use anti-tip tubes until you adapt to the change, and are sure you are not at risk to tip over.
2. When locked in place (in the “down” position) anti-tip tubes should be BETWEEN 1 1/2 and 2 inches off the ground.
 - a. If set too HIGH, they may not prevent a tip-over.
 - b. If set too LOW, they may “hang up” on obstacles you can expect in normal use. If this occurs, you may fall or your chair may tip over.
3. Keep Anti-Tip Tubes Locked In Place UNLESS:
 - a. You have an attendant, or
 - b. You have to climb or descend a curb, or overcome an obstacle, and can safely do so without them. At these times, make sure anti-tip tubes are up, out of the way.

ARMRESTS



Armrests will not bear the weight of this chair.

1. NEVER lift this chair by its armrests. They may come loose or break.
2. Lift this chair only by non-detachable parts of the main frame.

BACK CANES



Always keep fingers away from the locking mechanism located at the bottom of the back canes when folding the back down or pulling it back up.

FASTENERS



Many of the screws, bolts and nuts on this chair are special high-strength fasteners. Use of improper fasteners may cause your chair to fail.

1. ONLY use fasteners provided by an authorized supplier (or ones of the same type and strength, as indicated by the markings on the heads).

2. Over- or under-tightened fasteners may fail or cause damage to chair parts.
3. If bolts or screws become loose, tighten them as soon as you can.

FOOTRESTS



Footrests will not bear the weight of this chair

1. At the lowest point, footrests should be AT LEAST 2 INCHES off the ground. If set too LOW, they may “hang up” on obstacles you can expect to find in normal use. This may cause the chair to stop suddenly and tip forward.
2. To Avoid A Trip Or Fall When You Transfer:
 - a. Make sure your feet do not “hang up” or get caught in the space between the footrests.
 - b. Avoid putting weight on the footrests, as the chair may tip forward.
3. NEVER lift this chair by the footrests. Footrests detach and will not bear the weight of this chair. Lift this chair only by non-detachable parts of the main frame.

POSITIONING BELTS



Use positioning belts ONLY to help support the rider’s posture. Improper use of these belts may cause severe injury to or death of the rider.

1. Make sure the rider cannot slide down in the wheelchair seat.
2. If this occurs, the rider may suffer chest compression or suffocate due to pressure from the belts.
3. The belts must be snug, but must not be so tight that they interfere with breathing. You should be able to slide your open hand, flat, between the belt and the rider.
4. A pelvic wedge or a similar device can help keep the rider from sliding down in the seat. Consult with the rider’s doctor, nurse or therapist to find out if the rider needs such a device.
5. Use positioning belts only with a rider who can cooperate.
6. Make sure the rider can easily remove the belts in an emergency.
7. NEVER Use Positioning Belts:
 - a. As a patient restraint. A restraint requires a doctor’s order.
 - b. On a rider who is comatose or agitated.
 - c. As a motor vehicle restraint. In an accident or sudden stop the rider may be thrown from the chair. Wheelchair seat belts will not prevent this, and further injury may result from the belts or straps.

QUICK-RELEASE AXLES



1. Do not use this chair UNLESS you are sure that both quick-release rear axles are locked. An unlocked axle may come off during use and cause a fall.

2. An axle is not locked until the quick-release button pops out fully. An unlocked axle may come off during use, resulting in a fall, tip-over or loss of control and cause severe injury to the rider or others.

REAR WHEEL AXLES



WARNING

A change in set-up of the rear wheels will affect the center of balance of your chair.

1. The farther you move the rear axles FORWARD, the more likely it is that your chair will tip over backward.
2. Consult your doctor, nurse or therapist to find the best rear axle set-up for your chair. Do not change the set-up UNLESS you are sure you are not at risk to tip over.
3. Adjust the rear wheel locks after you make any change to the rear axles.
 - a. If you fail to do so, the locks may not work.
 - b. Make sure wheel locks are embedded in tires at least 1/8 inch when locked.

REAR WHEEL LOCKS



WARNING

Rear wheel locks are NOT designed to slow or stop a moving wheelchair. Use them only to keep the rear wheels from rolling when your chair is at a complete stop.

1. NEVER use rear wheel locks to try to slow or stop your chair when it is moving. Doing so may cause you to veer out of control.

2. To keep the rear wheels from rolling, always set both rear wheel locks when you transfer to or from your chair.
3. Low pressure in a rear tire may cause the wheel lock on that side to slip and may allow the wheel to turn when you do not expect it.
4. Make sure wheel locks are embed in tires at least 1/8 inch when locked. If you fail to do so, the locks may not work.

Features

FEATURES

- 3-48 degrees of tilt
- 6-36 degrees of recline (optional)
- Incredible low 13^{1/4} seat-to-floor height
- Orion back with 1" depth adjustability and Prism Ideal Cushion
- Aluminum seat pan
- Multi adjustable axle plate
- Removable rear wheels with stainless steel or plastic coated hand rims
- Arms heights: 9^{1/2"} – 14" (adjustable), Gel padding
- 70 degree pin style front rigging
- Aluminum or composite foot plates
- Adjustable rear anti tippers
- Padded lap tray
- Locking collar (optional)
- Heel loops
- Power tilt (optional upgraded version)

SPECIFICATIONS

- Seat Widths: 15"- 24"
- Seat Depths: 15" - 24"
- Overall Seat Width: Seat width + 9.5 including (hand rim to hand rim)
- Seat to floor height: 13^{1/4} – 20"
- Rear Wheel: 12", 20", 22" or 24" composite urethane
- Orion back (16", 18", 20" H). Low or tall push canes with stroller bars
- Adjustable back angle: -7°, 0°, 7°, 14°, 21°
- Arm Style: Full length adjustable height t-style (gel or vinyl), full length adjustable height pin release (t-style), full length adjustable height flip back (gel or vinyl)
- Front Rigging: Pin style, swing-away, dual swing-away, elevating leg rests or dual elevating leg rests.
- Weight capacity: 350lbs (159 kg)
- Product weight: 65lbs (including seating system)
- Frame Material: Steel
- Frame Colours: Black or Silver

Safety Inspection Checklist

Initial adjustments should be made to suit your personal body structure needs and preference. Thereafter follow these maintenance procedures:

Item	Initially	Weekly	Monthly	Periodically
<u>GENERAL</u>				
Wheelchair rolls straight (no excessive drag or pull to one side)	X		X	
<u>FRAME AND CROSSING TUBES</u>				
Inspect for loose or missing hardware	X			X
Inspect for bent frame or cross-tubes	X			X
<u>WHEEL LOCKS</u>				
Do not interfere with tires when rolling	X		X	
Pivot points free of wear and looseness	X		X	
Wheel locks easy to engage	X			X
Wheel locks prevent chair from moving when engaged	X	X		
<u>SEAT AND BACK</u>				
Inspect for rips or sagging	X			X
Inspect for loose or broken hardware	X		X	
Inspect cane and hand grips for wear/looseness	X		X	
<u>TIRES</u>				
Inspect for flat spots, cracks and wear Caution: as with any vehicle, the wheels and tires should be checked periodically for cracks and wear and should be replaced.	X	X		X
<u>REAR WHEELS</u>				

If equipped, quick-release axles lock properly	X	X		
No excessive side movement or binding when lifted and spun	X			X
Inspect for cracked, bent or broken spokes	X	X		
<u>HANDRIMS</u>				
Inspect for signs of rough edges or peeling	X			X
<u>FRONT CASTERS/FORKS</u>				
Inspect caster fork assembly for proper tension by spinning caster; caster should come to a gradual stop	X	X		
Adjust bearing system if wheel wobbles or binds to a stop. Ensure wheel bearings are clean and free of moisture.	X		X	X
Check stem caster journal and lock nut for tightness	X		X	
Inspect casters for cracks and wear	X	X		X
Inspect for cracked, bent or broken spokes	X			
<u>CLEANING</u>				
Clean upholstery and armrests	X			X

Troubleshooting

Chair Veers Right/Left	Wheels Drift	Sluggish Turn or Performance	Caster Flutter	Squeaks and Rattles	Looseness in Chair	
		X	X	X	X	Solutions
						Check for loose nuts and bolts
X	X		X			Check angle adjustable caster assembly
X	X					Check that rear wheels are equally spaced away from seat frame.

Labels

CAPELLA**WARNING**

**DO NOT OPERATE WITHOUT
THE ANTI-TIP MECHANISM
IN PLACE**

TILT USE CAUTION

**WHEN PROPELLING THIS CHAIR IN
THE TILT POSITION. USER WEIGHT
350 LBS MAXIMUM**

WEIGHT CAPACITY

**350 LBS. (159 kgs)
REFER TO OWNER'S MANUAL**



Future Mobility Healthcare Inc.
Address: 3223 Orlando Drive
Mississauga, Ontario, Canada, L4V1C5
Toll-free: 1-888-737-4011 - www.futuremobility.ca

WHEELCHAIR

Manufactured Year
2013

Model: Capella20
Max slope Uphill: 14 degrees
Max slope Downhill: 14 degrees

CAPELLA 45**TILT USE CAUTION**

**WHEN PROPELLING THIS CHAIR IN
THE TILT POSITION. USER WEIGHT
250 LBS MAXIMUM**

WARNING

**DO NOT OPERATE WITHOUT
THE ANTI-TIP MECHANISM
IN PLACE**

WEIGHT CAPACITY

**250 LBS. (114 kgs)
REFER TO OWNER'S MANUAL**



Future Mobility Healthcare Inc.
Address: 3223 Orlando Drive
Mississauga, Ontario, Canada, L4V1C5
Toll-free: 1-888-737-4011 - www.futuremobility.ca

WHEELCHAIR

Manufactured Year
2013

Model: Capella45
Max slope Uphill: 04 degrees
Max slope Downhill: 14 degrees

Service and Repair

Please contact the dealership or supplier from where the wheelchair was purchased for service and moderate repair.

In some circumstances, it may be necessary to return your wheelchair to Future Mobility for repairs. Contact Future Mobility directly by telephone, fax, or e-mail to obtain information regarding repair at Future Mobility facilities. You will be asked by the Customer Service Representative for the serial number that is affixed to the wheelchair. This information will allow Future Mobility to serve you better.

If any of the following conditions are observed, the wheelchair must be serviced at Future Mobility:

1. Any part of the frame is cracked or broken
2. Any weld is cracked or broken

Always contact dealership prior to sending a wheelchair for repairs. For safe and secure shipping, the wheelchair must be placed in a suitable carton, or fastened to a pallet, to ensure it does not sustain damage during shipping. Contact Future Mobility to receive specific instructions for packaging and shipping your wheelchair. Alternatively, Future Mobility may arrange for pick-up.

Tire size

All tires available for the Capella / Capella 45 are marked with their size on the sidewall.



6 Tilt Mechanism

Activating the Tilt Mechanism [Figure 1]

1. Grasp the tilt handle ('B') located on the stroller handle ('A')
2. Pull up on handle to release the wheelchair from the 'locked' position and gently push down on the stroller handle to tilt the chair.
3. When the chair tilts to the desired angle, release the tilt handle and the chair will 'lock' in place at the specific angle.
4. To return the wheelchair to the nominal 'zero' position grasp the tilt handle and pull up on the stroller handle to tilt the chair.
5. Release the tilt handle when the wheelchair reaches the desired angle.

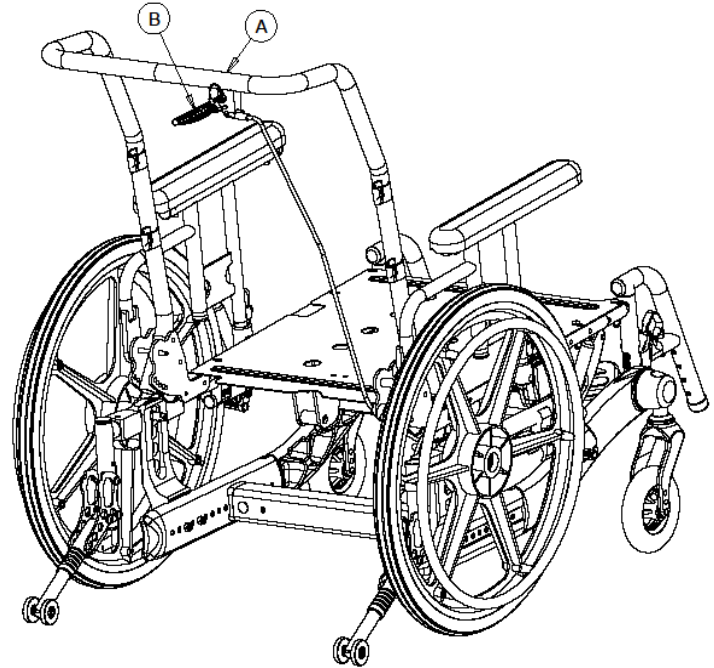


Figure 1

7 T-Style Fixed Arm Rests

Installing and removing T-Style Fixed Armrest [Figure 2]

1. Push armrest into the armrest base until lock is engaged into slot ('A')
2. For removal, push and hold release lever ('B'), while lifting armrest from the armrest base

Note: The T-Style fixed Arm Rest is not adjustable in height

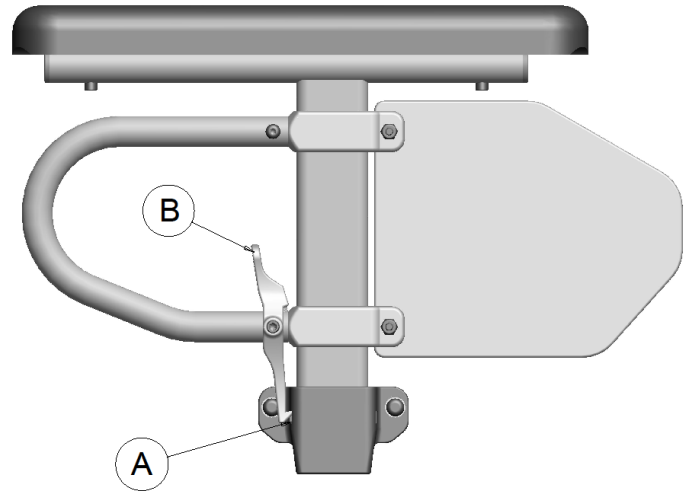


Figure 2

8 T-Style Arm Rests Height Adjustable

Adjusting T-Style Arm Height [Figure 3]

1. Pull out the height adjustment latch lever to disengage the holding pin.
2. Lift armrest until desired position is acquired (ranges from 9"– 13" in ½" increments).
3. Release the height adjustment latch lever to engage the holding pin.
4. Repeat this procedure for the opposite T-style arm assembly.

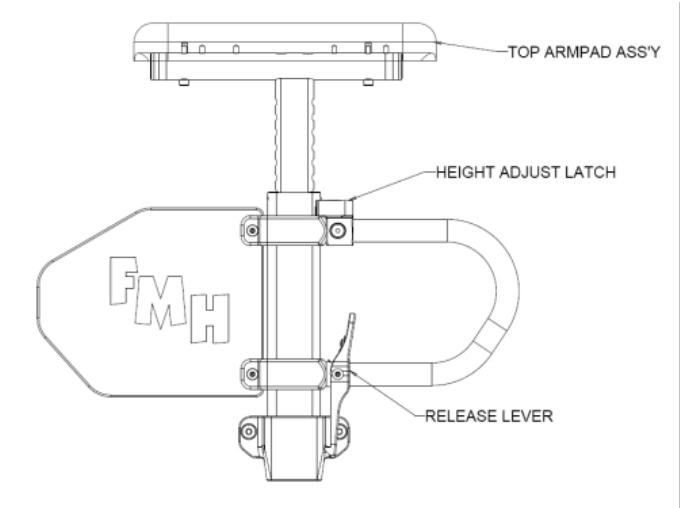


Figure 3

9 Flip-Up Arm Rests

Engaging and Disengaging Flip-Up Style Armrest [Figure 4]

1. To engage, push armrest into arm socket until release lever ('A') is engaged into slot.
2. For flip-up, push and hold release lever ('A'), while lifting armrest from arm socket.

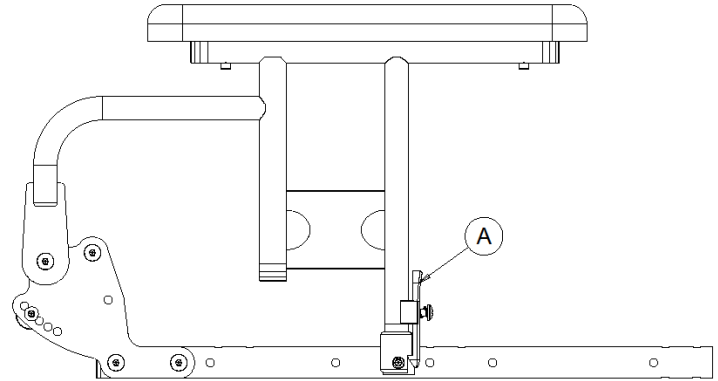


Figure 4

10 Footrest Upgraded Dual Swingaway

Installing Footrest Upgraded Dual Swingaway

[Figure 5]

1. Position swing-away footrest onto hanger ('A') ensuring pivot plug sits flush onto hanger tube.
2. To remove footrest pull up handle ('B') releasing latch ('C') and swing footrest outward.

Footplate Length Adjustment

1. Loosen footrest bracket bolt from hole 'D'. Slide footrest extension tube up or down to desired height.
2. Tighten bolt.

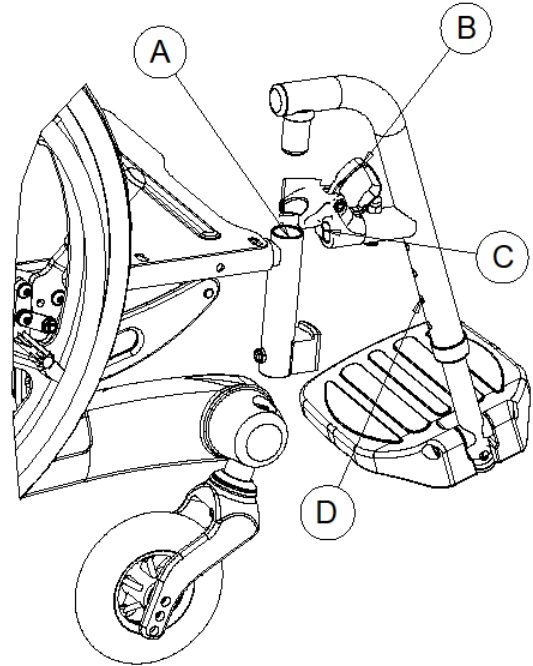


Figure 5

11 Elevating Footrest Upgraded Dual Swingaway

Installing Footrest Upgraded Dual Swingaway [Figure 6]

1. Position swing-away footrest onto hanger ('A') ensuring pivot plug sits flush onto hanger tube.
2. To remove footrest pull up handle ('B') releasing latch ('C') and swing footrest outward.

Footplate Length Adjustment

1. Loosen footrest bracket bolt from slot ('D'). Slide footrest extension tube up or down to desired height.
2. Tighten bolt.

Changing Angle of Elevating Legrest

1. Turn knob ('E') counterclockwise to release the elevating legrest from being locked at an angle.
2. Grasp the elevating legrest outer part and slowly pull towards oneself. The angle of the elevating legrest outer part should become larger.
3. Set at desired angle and then turn knob ('E') clockwise to 'lock' the outer elevating laegrest part in place.
4. Repeat for the other side if desired. Ensure that the legrest is securely in place once adjustments have been made.

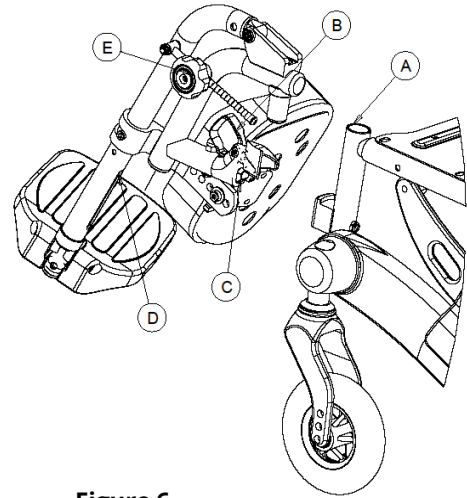


Figure 6

12 Chair Back

Manufacturer's setting is 90 degrees, with each hole representing 7 degree increments (holes range from 83 degrees to 111 degrees).

1. Remove nut and bolt on both sides of the back post.
2. Move back cane to desired angle and replace nuts and bolts making sure covered spacers are in place.

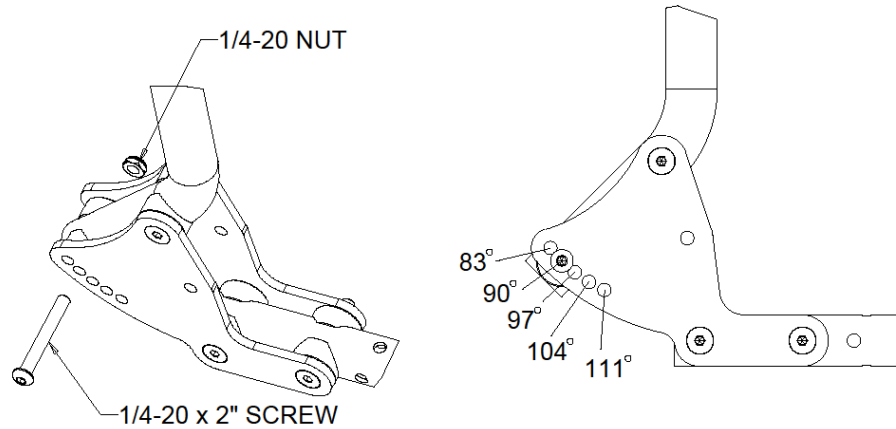


Figure 7

To Adjust Fold Down Back Angle [Figure 8]

Manufacturer's setting is 90 degrees, with each hole representing 7 degree increments (holes range from 83 degrees to 111 degrees).

1. Push up on Locking Pin and fold the back away from the holes located for setting the back angle.
2. Remove the shoulder bolt and nut on bolt sides of the back post.
3. Place the shoulder bolt and nut in the desired hole location as per the customers specifications. One can refer to the above diagram for hole placement from 83° to 111°.
4. Push up on Locking Pin and fold the back in the new hole locations. Check the angle of the back and adjust the hole location if needed. Ensure the Locking device is engaged and the back is not loose.

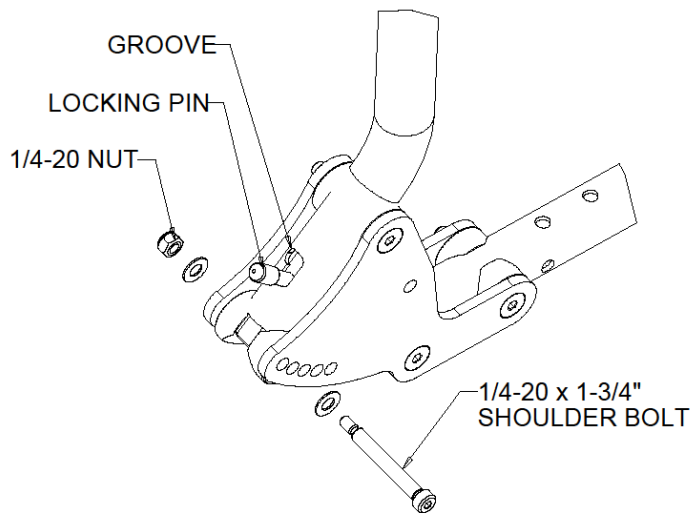


Figure 8

To Fold Down the Back

One can fold down the back for easy transport or other reasons by simply pushing up on the locking pin as shown in the diagram below.

13 Seat Width and Depth

Changing Seat Width [Figure 9, Figure 10, Figure 11]

1. Start with either the left side or right side of the wheelchair and remove four (4) 1/4-20 x 1.25" screws ('C') and four (4) 1/4-20 nuts ('E') from the seat frame ('A') (2 in the front and 2 in the back) on the same side.
2. Proceed to the lower frame ('B') and remove four (4) 1/4-20 x 2.25" screws ('D') and four (4) 1/4-20 nuts ('E') (2 in the front and 2 in the back) on the same side.
3. Grasp the seat frame and lower frame and pull towards oneself observing the holes being uncovered. The Frame can be adjusted by 2" on each side which is 5 holes @ 1/2" center to center on each side. For example to increase the width of the chair by 2" overall each side has to be increased by 1".
4. Place the screws and nuts in their respective holes and hand tighten. The 1/4-20 x 1.25" screws attach to the seat frame while the 1/4-20 x 2.25" screws attach to the lower frame. See Figure 5b and 5c for hole locations on the crossbar and seat frame.
5. Now start with the side (either left or right) which remains to be adjusted and remove four (4) 1/4-20 x 1.25" screws ('C') and four (4) 1/4-20 nuts ('E') from the seat frame ('A') as well as remove four (4) 1/4-20 x 2.25" screws ('D') and four (4) 1/4-20 nuts ('E') from the lower frame.

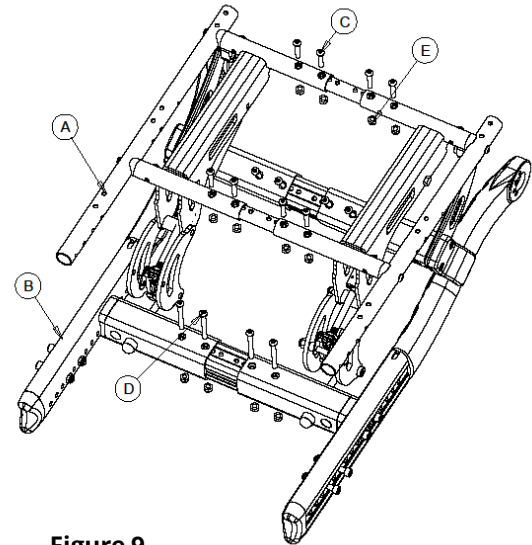
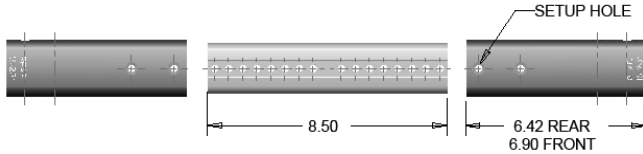


Figure 9

6. Repeat step # 3 and #4 and check the overall size of the chair before fully tightening the screws and nuts.

LOWER CROSSBAR SETUP - CHAIR WIDTH FROM 16" TO 20"

CHAIR WIDTH	16"	17"	18"	19"	20"
SETUP HOLE	1	2	3	4	5



LOWER CROSSBAR SETUP - CHAIR WIDTH FROM 20" TO 24"

CHAIR WIDTH	20"	21"	22"	23"	24"
SETUP HOLE	1	2	3	4	5

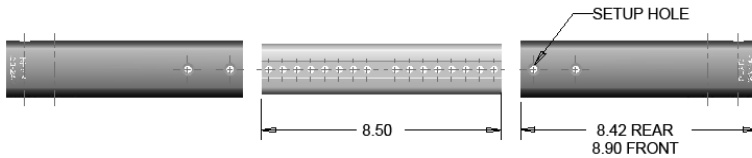
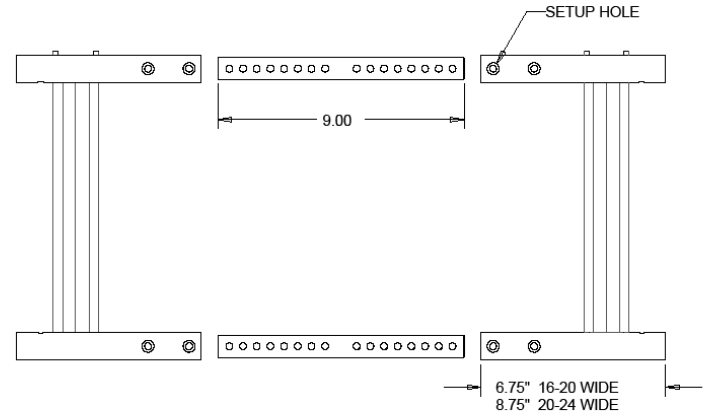


Figure 2

SEATFRAME SETUP - CHAIR WIDTH FROM 16" TO 20"

CHAIR WIDTH	16"	17"	18"	19"	20"
SETUP HOLE	1	2	3	4	5



SEATFRAME SETUP - CHAIR WIDTH FROM 20" TO 24"

CHAIR WIDTH	20"	21"	22"	23"	24"
SETUP HOLE	1	2	3	4	5

Figure 3

Changing Seat Depth (Capella) [Figure 12]

1. The Capella seat depth is adjusted from the rear of the wheelchair. It has 3 different depths of seat rail which come with the standard configuration. The depth of the seat rails are 15"-16", 17"-18", and 19"-20". Remove four (4) 1/4-20 x 2" flat head screws ('A') and four (4) 1/4-20 nuts ('B') from the bottom side of the back cane bracket ('C').
2. Move the stroller handle assembly ('D') backwards 1" (for example if one wants to change the depth from 15" to 16") towards the back of the chair and re-insert the four (4) 1/4-20 x 2" flat head screws and four (4) 1/4-20 nuts into the 'new' holes. Tighten the screws and nuts and check the stability of the stroller handle assembly.
3. As the depth of the chair increases or decreases the horizontal location of the wheel must also change. (Refer Changing Horizontal Location of Rear Wheels).
4. If one would like to change the depth of the wheelchair from 15"-16" to 19"-20" then the seat rails need to be replaced.

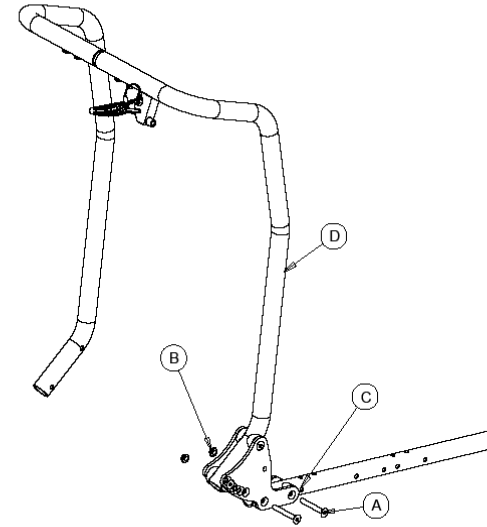


Figure 12

Changing Seat Depth (Capella 45) [Figure 13]

1. The Capella 45 wheelchair has only one depth of seat rail which come with the standard configuration. The seat depth is adjusted from the front of the chair.
2. To change the seat depth of the wheelchair, the front leg rest hanger must be moved in or out.
3. As the depth of the chair increases or decreases the horizontal location of the wheel.
4. Must also change. (Refer Changing Horizontal Location of Rear Wheels).

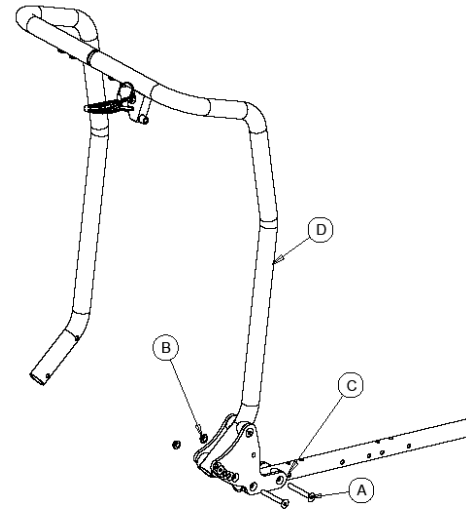


Figure 13

14 Rear Wheels

Changing Horizontal Location of Rear Wheels [Figure 14]

1. Remove the Rear wheels following the instructions in section "Removing/Installing Rear Wheels".
2. Remove two(2) 5/16-18 x 2" socket cap screws and two(2) 5/16-18 nuts from the wheel lock/anti-tip assembly.
3. If the seat depth is increased by 1" (from 15" to 16") move the wheel lock/anti-tip assembly backwards by 1" and insert the two(2) 5/16-18 x 2" socket cap screws and two(2) 5/16-18 nuts into the 'new' hole locations. If the seat depth is decreased by 1" (from 16" to 15") move the wheel lock/anti-tip assembly forwards by 1" and insert the screws and nuts.
4. Repeat steps #2 and #3 for the other side of the chair and ensure the screws on both sides of the wheelchair holding the wheel lock/anti-tip assembly are inline.

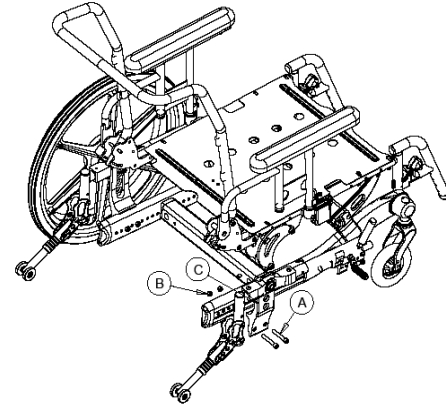


Figure 14

Changing Vertical Location of Rear Wheels

See section marked SEAT TO FLOOR

Removing/Installing Rear Wheels [Figure 15]

1. Push in the mushroom head ('A') of the quick-release axle ('B') and pull the axle out through the opening in the center of the rear wheel ('C') and shaft spacer ('D').
2. Push in the detent pin of the quick-release axle again and pull the axle out of the rear wheel and shaft spacer.
3. To reinstall the rear wheel onto the wheelchair, reverse steps 1 to 2.
4. If using the Push-to-Lock mechanism, ensure the wheel locks properly. See the section ADJUSTING THE WHEEL LOCKS

Make sure the detent pin and locking pins of the quick-release axle are fully released BEFORE operating the wheelchair. The locking pins **MUST** be protruding past the inside of the rear wheel axle bushing for a positive lock. Keep locking pins clean.

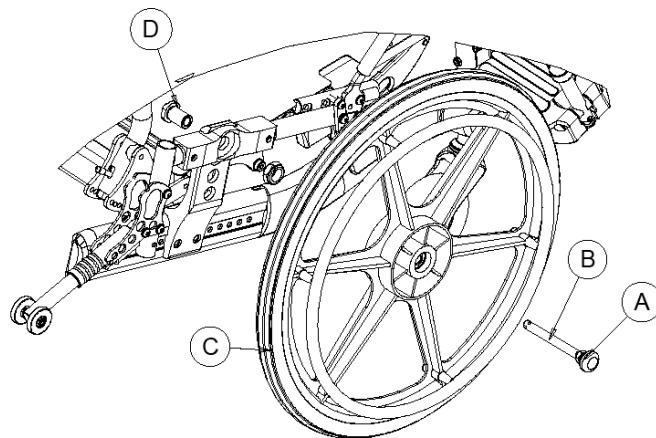


Figure 15

Future Mobility Healthcare Inc. recommends inserting quick-release axles with the detent pin to the inside of the wheelchair to prevent accidental release during contact activities [Figure 16].

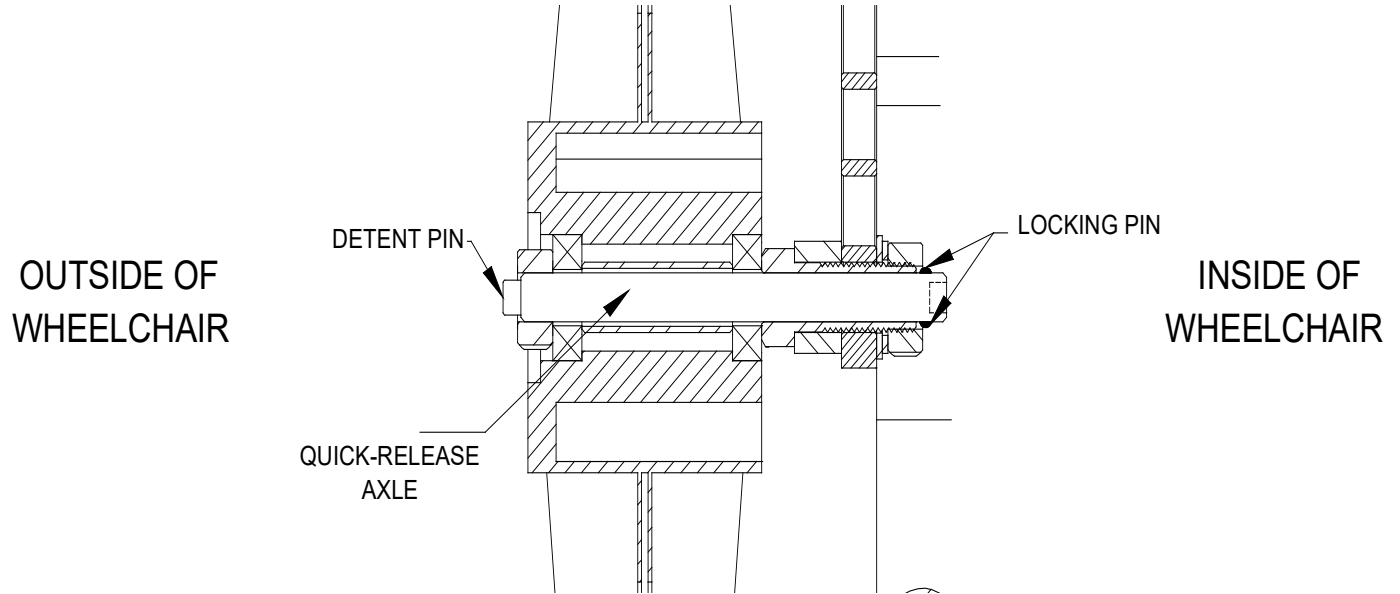


Figure 16

15 Wheel Locks

Using the wheel locks [Figure 17]

WARNING: DO NOT attempt to stop a moving wheelchair with the wheel locks. WHEEL LOCKS ARE NOT BRAKES - injury or damage may occur.

1. Ensure the wheelchair is not moving before engaging the wheel locks.
2. Perform one (1) of the following:
3. Push-to-Lock – to engage, push the wheel lock handle ('A') forward.
4. Disengage the wheel locks by reversing STEP 2.

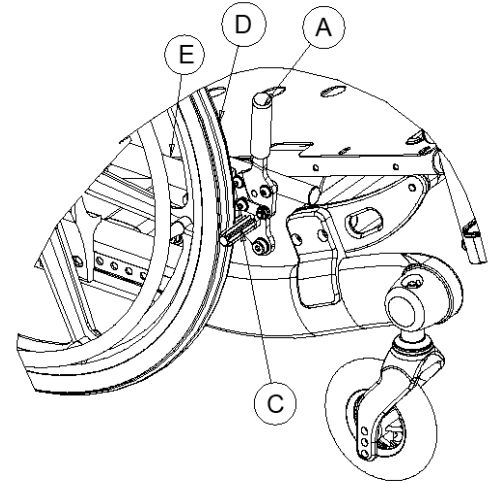


Figure 17

Adjusting the Patient Operated Wheel Locks [Figure 18]

1. Disengage the wheel locks ('A').
2. Loosen the two (2) cap screws ('B') which hold the wheel lock clamps in the above figure that secure the wheel lock to the wheelchair frame.
3. Reposition the wheel lock along the wheel lock tube ('E') so that when engaged, the wheel lock brake shoe ('C') embeds the tire ('D') 1/8" (3/16" for pneumatic tires) and HOLDS the occupied wheelchair in place when pushed.
4. Securely tighten the two cap screws securing the wheel lock to the wheelchair frame.
5. Engage the wheel lock.
6. Measure the distance the wheel lock is embedded into the tire
7. Repeat STEPS 1 to 6 until the wheel lock brake shoe embeds the tire and HOLDS the occupied wheelchair in place when pushed.
8. Engage both wheel locks and ensure the occupied wheelchair is held in place when pushed.

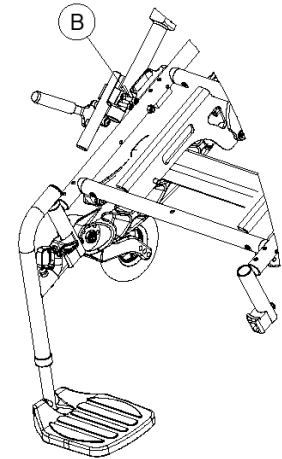


Figure 18

16 Front Casters

Replacing/Installing Front Casters [Figure 19]

Note: This procedure for replacing with the same size front caster.

1. Remove the nut ('A'), bolt ('B') and spacers ('C') which secure the caster to the fork assembly ('D').
2. Remove the front caster.
3. Slide in the new 4,5,6,7 or 8 inch front caster into the space between the fork.
4. Tighten the nut, bolt and spacers to secure the caster into place.
5. Repeat this procedure for the other front caster wheel assembly if required.
6. To properly tighten caster journal system and guard against flutter, perform the following check:
 - a. Tip back of wheelchair to floor
 - b. Pivot both forks and casters to top of their arc simultaneously.
 - c. Let casters drop to bottom of arc (wheels should swing once to one-side, then immediately rest in a straight downward position).
 - d. Adjust locknuts according to freedom of caster swing.
7. Test wheelchair for maneuverability.
8. Re-adjust locknuts if necessary and repeat STEPS 6 to 7 until correct.
9. Snap dust cover over the locknut and stem.

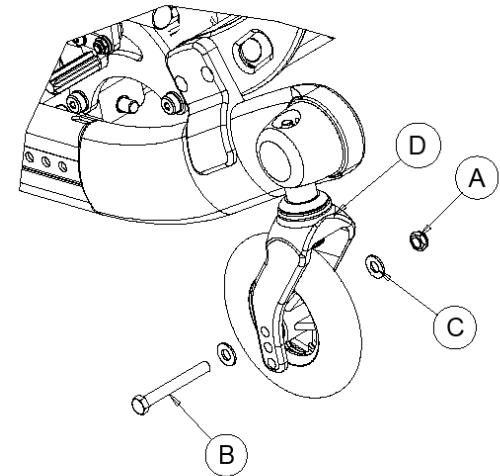


Figure 19

Replacing/Installing Front Forks [Figure 20]

1. Remove the locknut ('A') which secures the caster stem bolt ('D') to the caster housing ('E').
2. Drop the front caster and fork assembly out of the caster housing.
3. Remove the locknut ('B') which secures the caster stem to the fork ('C')
4. Also Remove the bearing ('F'), Fork spacer seal ('G') and nylon spacer ('H')
5. Follow REPLACING/INSTALLING FRONT CASTERS guide in this section to remove the front caster from the fork assembly.
6. Place the caster in the new fork and assemble with the caster nut and bolt and spacer.
7. Secure the new fork and caster assembly in place by using the locknut and caster stem bolt.
8. Follow steps 5 to 9 of REPLACING/INSTALLING FRONT CASTERS guide to properly install the new fork assembly and prevent fluttering.

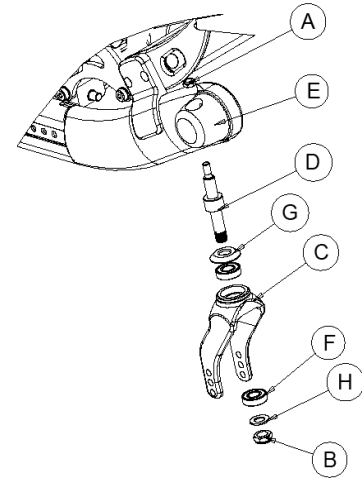
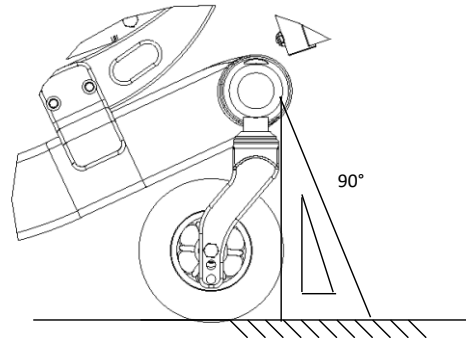
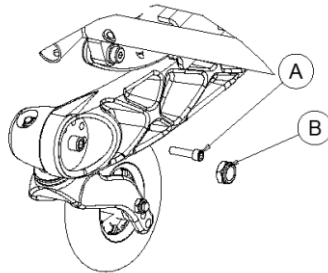


Figure 20

Replacing/Installing Front Fork Assembly [Figure 21, Figure 22]

1. Insert the caster fork assembly into the wheelchair main side rail opening as shown in Figure 6c.
2. **Important:** Ensure the caster fork is 90° perpendicular to the flat surface
3. Insert the 1/4-20 x 1" socket head cap screw ('A') through the wheelchair main side rail opening and caster stem housing as shown in Figure 6c. The socket head cap screw is used to hold the fork stem in place so that when the angle of the fork assembly is adjusted it is maintained. The fork angle can be set at 0°, 2°, 4° or 6° as shown in Figure 6d.
4. Also secure the fork assembly to the main side rail by using a 1/2-20 lock nut ('B') as shown in Figure 6c.

Install the front caster by following REPLACING/INSTALLING FRONT CASTERS guide In the above section.



CASTER FORK
SET ANGLE

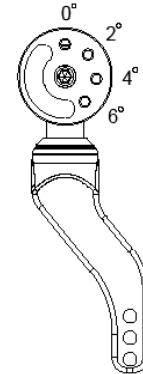


Figure 21

Figure 22

17 Seat to Floor

1. Follow the values in the table below to achieve the desired seat to floor height.
2. Ensure that no weight is on the wheelchair while performing the operations
3. Ensure after changing the seat to floor height the caster stem fork is 90° (perpendicular) to the floor.

STF FRONT [in"]	REAR WHEEL [in"]	AXLE PLATE HOLE	FORK HOLE	CASTER SIZE [in"]	STEM SIZE
11.75	16	2	1	4	XSHORT
12.25	12	4	1	4	XSHORT
13.00	16	3	1	5	SHORT
13.00	20	1	1	5	SHORT
13.50	16	3	2	5	SHORT
13.50	16	3	1	6	SHORT
13.50	20	2	2	5	SHORT
13.50	20	2	1	6	SHORT
14.00	16	4	3	5	SHORT
14.00	16	4	2	6	SHORT
14.00	20	2	3	5	SHORT
14.00	20	2	2	6	SHORT
14.00	22	1	3	5	SHORT
14.00	22	1	2	6	SHORT
14.50	16	4	3	6	SHORT
14.50	20	2	3	6	SHORT
14.50	22	1	3	6	SHORT

15.00	20	3	3	7	SHORT
15.00	22	2	3	7	SHORT
15.00	24	1	3	7	SHORT
15.50	20	3	1	5	LONG
15.50	22	2	1	5	LONG
15.50	24	1	1	5	LONG
16.00	20	4	2	5	LONG
16.00	20	4	1	6	LONG
16.00	22	3	2	5	LONG
16.00	22	3	1	6	LONG
16.00	24	2	2	5	LONG
16.00	24	2	1	6	LONG
16.50	20	4	3	5	LONG
16.50	20	4	2	6	LONG
16.50	22	3	3	5	LONG
16.50	22	3	2	6	LONG
16.50	24	2	3	5	LONG
16.50	24	2	2	6	LONG
17.00	22	4	3	6	LONG
17.00	22	4	2	7	LONG
17.00	24	3	3	6	LONG
17.00	24	3	2	7	LONG

17.50	22	4	3	7	LONG
17.50	24	3	3	7	LONG
18.00	24	4	3	8	LONG
19.00	24	4	3	8	LONG

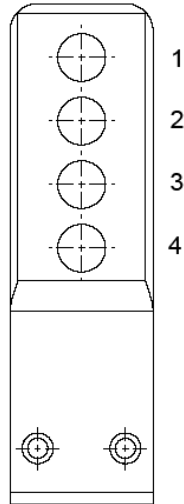


Figure 23

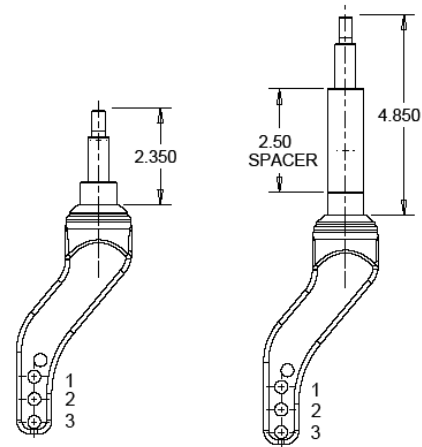
CASTER FORK
SHORT STEM
NO SPACER

Figure 24

CASTER FORK
LONG STEM
2.5" SPACER

18 Anti-Tippers

WARNING: After ANY adjustments, repair or service and BEFORE use, make sure all attaching hardware is tightened securely – otherwise injury or damage may occur.

Installing/Adjusting the Anti-Tippers

WARNING: Anti-tippers are specific to the different seat-to floor angles and/or seat-to-floor heights. Refer to the chart in this section of the manual for correct usage and adjustment. If these requirements CANNOT be achieved, DO NOT use the wheelchair. Contact a qualified technician. If changing the seat-to-floor height with or without a change to seat-to-floor angle, the correct anti-tippers MUST be used to maintain a 1 ½" to 2" ground clearance.

Seat-to-floor angle of 3 degrees to 6 degrees: if so equipped, anti-tippers MUST be attached at all times. In as much as the anti-tippers are an option on this wheelchair (you may order with or without the anti-tippers), Future Mobility Healthcare Inc. strongly recommends ordering the anti-tippers as a safeguard for the wheelchair user.

Anti-tippers MUST be fully engaged and snap buttons fully protruding out of adjustment holes.

Ensure both anti-tippers are adjusted to the same mounting hole.

Installing Anti-Tippers [Figure 25]

1. Bolt the anti-tip assembly ('B') onto the anti-tip mount tube weldment ('A') at the desired height
2. Measure the distance between the bottom of the anti-tipper wheels and the ground/floor.
3. If the distance between the bottom of the anti-tipper wheels and the ground/floor is not 1-1/2" to 2" adjust the anti-tipper location.

Note: A 1 1/2" to 2" clearance between the bottom of the anti-tipper wheels and the ground/floor MUST be maintained at all times.

Changing Vertical Location of Rear Wheels [Figure 26]

1. Pull the sleeve ('A') downwards on the tube to release the pin engagement
2. Rotate the Anti-tip assembly ('B') upwards until the pin engagement is at the top position.

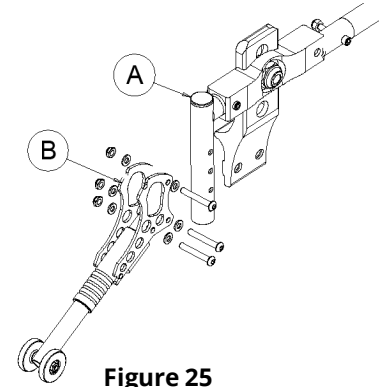


Figure 25

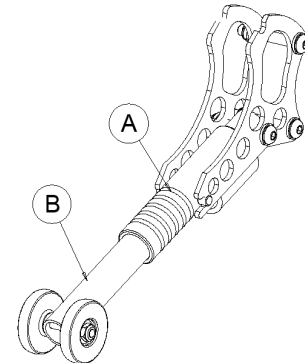


Figure 26

19 **MAINTENANCE**

GENERAL MAINTENANCE

1. Maintaining your chair in good working order will keep it functioning properly and help extend the working life of the chair.
2. Clean your chair often.
3. Make sure to replace worn or damaged parts as soon as possible to prevent future injury.
4. It is recommended to have any work done on the chair by an authorized dealer.
5. Follow the safety inspection checklist chart for optimum performance.
6. We recommend that once a year to have a complete inspection, service and safety check of your chair by an authorized dealer.



WARNING

Failing to follow these recommendations could lead to possible injury.

SERVICE AND REPAIR

1. Please contact the dealership or supplier from where the wheelchair was purchased for service and moderate repair.
2. In some circumstances, it may be necessary to return your wheelchair to Future Mobility for repairs.

3. Contact Future Mobility directly by telephone, fax, or e-mail to obtain information regarding repair at Future Mobility facilities.
4. You will be asked by the Customer Service Representative for the serial number that is affixed to the wheelchair.
5. If any of the following conditions are observed, the wheelchair must be serviced at Future Mobility:
 - a. Any part of the frame is cracked or broken
 - b. Any weld is cracked or broken
6. For safe and secure shipping, the wheelchair must be placed in a suitable carton, or fastened to a pallet, to ensure it does not sustain damage during shipping. Contact Future Mobility to receive specific instructions for packaging and shipping your wheelchair. Alternatively, Future Mobility may arrange for pick-up.

CLEANING YOUR CHAIR

1. **Cleaning your Seat and Back**
 - a. Remove the outer and inner cover if required and hand wash with a small amount of detergent.
 - b. Hang to dry the covers, do not machine dry or wring out.
 - c. Use multipurpose disinfectant to spray seat, scrub with soft brush if needed.

- d. Test an inconspicuous area first for color-fastness.
- e. **DO NOT USE HOT AIR FOR DRYING.**
- f. **DO NOT IMMERSE** the cushion or back foam in water or cleaning solution.
- g. Some color leeching from the cover onto the foam is normal and cannot be washed out.

2. Paint Finish

- a. Clean the painted surfaces with mild soap at least once a month
- b. Protect the paint with a coat of non-abrasive auto wax every three months.

3. Axles and Pivot Joints

- a. Clean around axles and moving parts WEEKLY with a slightly damp (not wet) cloth.
- b. Wipe off or blow away any dust or dirt on axles or moving parts.



WARNING

Do not use abrasive powders or scouring pads on painted surfaces.

Do not ever submerge chair in water.

Do not use cleaning products without consulting the products' instructions and taking appropriate precautions for human exposure to chemicals.

20 Warranty

LIFETIME

Wheelchair Frame and Cross- Brace

1. Future Mobility Healthcare Inc. guarantees the frame and cross brace against defects in material and workmanship for life or for as long as the original purchaser owns the chair.
2. This warranty is void if:
 - a. The chair is shown to be abused.
 - b. The chair is not maintained as recommended in the owner's manual.
 - c. The chair is transferred to a different person from the original owner.

FOR TWO (2) YEARS

Wheelchair Back and Cushions (Excluding Upholstery)

1. Future Mobility Healthcare Inc. guarantees the back and cushion to be free of defects in material and workmanship for two years.

Wheelchair Components Excluding Limitations

1. Future Mobility Healthcare Inc. guarantees the wheelchair components to be free of defects in material and workmanship for two years.

FOR (90) DAYS

Cushion and Back Upholstery

1. Future Mobility Healthcare Inc. guarantees the wheelchair cushion and back upholstery to be free of defects in material and workmanship for 90 days.

LIMITATIONS

- a. .
 - b. Damage from negligence, accident, misuse, or from improper installation or repair.
 - c. Products modified without written consent from FMHI.
 - d. Damage from exceeding the wheelchair weight limit.
2. This warranty is VOID if the original chair serial number label is removed or altered.
 3. This warranty is not transferable and only applies to the first consumer purchase of this wheelchair through an authorized Future Mobility Dealer.

WARRANTY PROCEDURES

1. If within this warranty period the product shall be proven to be defective, such product shall be repaired or replaced, at FMHI discretion.
2. FMHI's sole obligation and your exclusive remedy under this warranty shall be limited to the repair and/or replacement of the product or its parts.
3. This warranty does not include any labor or shipping charges incurred in replacement part installation or repair of any product.
4. For warranty service, please contact the dealer from whom you purchased your FMHI product. In the event you do not receive satisfactory warranty service, please write directly to FMHI.
5. DO NOT return products to FMHI without our prior consent. The defective unit or parts must be returned for warranty inspection within thirty (30) days of the return authorization date. (FMHI will issue a return authorization number). Please prepay all shipping charges; C.O.D. shipments will be refused.

The foregoing warranty is exclusive and in lieu of all other expressed warranties. It shall not extend beyond the duration of the expressed warranty provided herein and the remedy for violations of any implied warranty shall be limited to repair or replacement of the defective product pursuant to the terms contained herein. FMHI shall not be liable for any consequential or incidental damages whatsoever

Cut below this line #

Warranty Registration Form

To validate your Future Mobility HealthCare warranty, please complete the below form and return it the address at the end of this form. Visit online at www.futuremobility.ca for more Future Mobility Products.

Name: _____
Street Address: _____
City/Country/Postal Code: _____
Telephone: _____
Purchased Date: _____
Purchased From (Dealer Name & Address): _____
Product Purchased: _____
Serial Number: _____

Print and Mail it to:
Future Mobility Healthcare Products
6750 Professional Court
Mississauga, Ontario, L4V 1X6
Fax: 905-671-3377

CANADA

Future Mobility Healthcare Inc.

6750 Professional Court

Mississauga, ON L4V 1X6

Ph: 905 671-1661 – Toll Free: 1 888 737-4011

Fax: 905 671-3377

Toll Free Fax: 1-866-670-3377

e-mail:customerservice@futureamobility.ca

www.futuremobility.ca



FUTURE MOBILITY

INNOVATIVE SEATING AND HOME MOBILITY SOLUTIONS

USA

Future Mobility Products US LLC

1 Buffalo River Place

Buffalo, NY, 14210

Tel: 716-783-9130 – Toll Free 1-855-938-

898873

Fax: 716-783-9236

Toll Free Fax: 1-866-670-3377

e-mail:customerservice@futureamobility.ca

www.futuremobility.ca



FUTURE MOBILITY

PRODUCTS