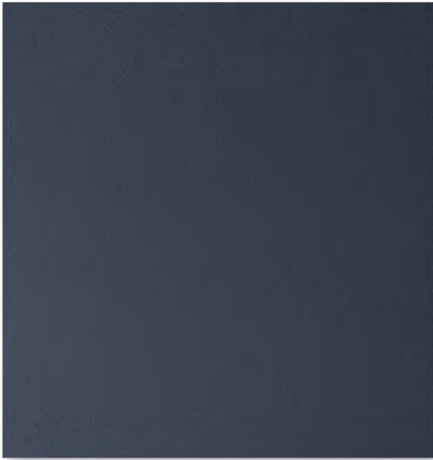
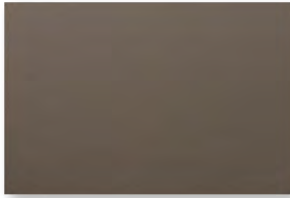


GUARDIAN ecoSense[®] BY SPRADLING



GUA-1325
ARMOR



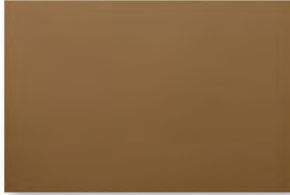
GUA-1305
CONVOY



GUA-1323
MOAT



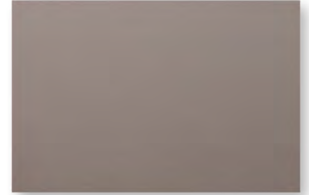
GUA-1319
SIREN



GUA-1311
FENCE



GUA-1318
STEEL



GUA-1304
LATCH

SAVOY ecoSense[®] BY SPRADLING



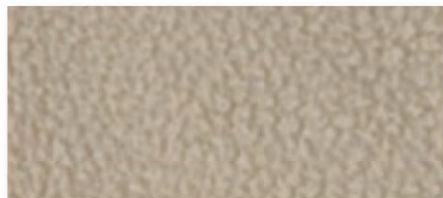
SAV-9517
EUCALYPTUS



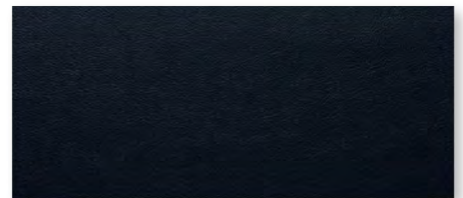
SAV-9524
BLACK



SAV-401
VINTAGE GOLD



SAV-409
WARM TAUPE



SAV-9516
INDIGO

CASSARA ecoSense[®] BY SPRADLING



CAS-9611
AMETHYST



CAS-9613
CORK



CAS-9604
INDIGO



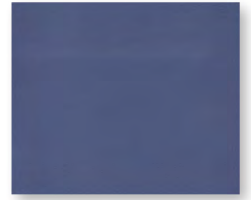
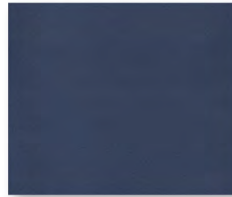
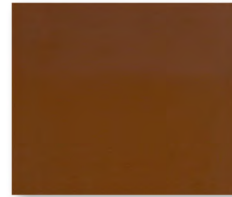
CAS-9607
PATINA



CAS-9606
SUCCULENTS

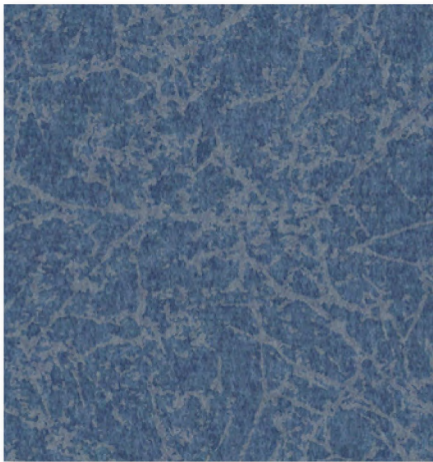
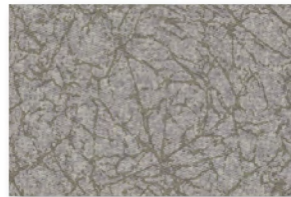
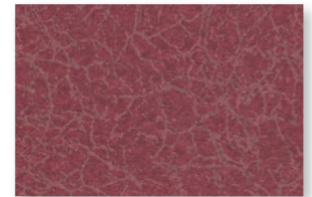
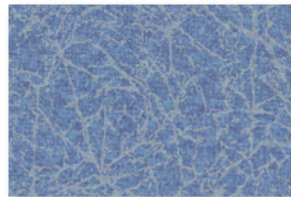
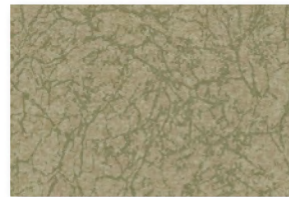
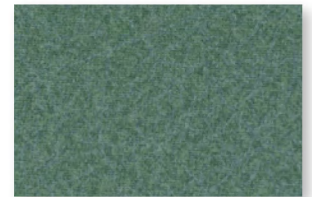
PATRIOT PLUS

NEO

PAT-427
BLUERIDGEPAT-8602
OATMEALPAT-8604
CONCRETEPAT-8567
DOVEPAT-454
ROYAL BLUEPAT-432
IMPERIAL BLUEPAT-8584
TAUPEPAT-8516
CHESTNUTPAT-8615
BERRY

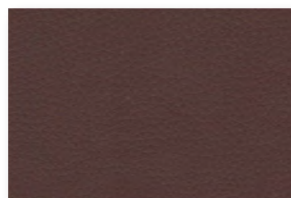
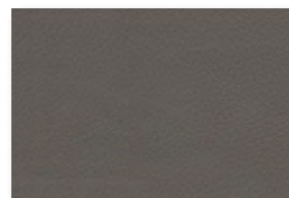
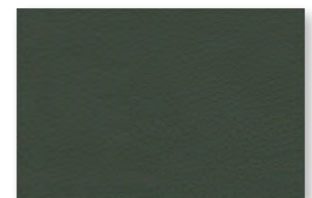
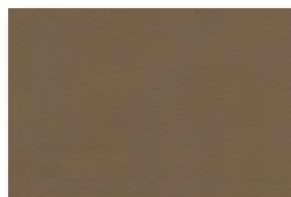
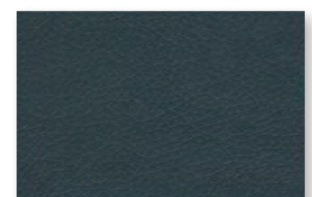
RENAISSANCE

NEO

REN-9214
STEEL BLUEREN-9201
COBBLESTONEREN-9205
GYPSUMREN-9208
WINEBERRYREN-9207
ICE BLUEREN-9210
CYPRESSREN-9212
BLUEJADE

PERFORMANCE COLLECTION

DOLCE

DOL-6705
SANDDOL-6714
BURGUNDYDOL-6727
METEORDOL-6717
MOSSDOL-6710
LIONDOL-6724
JETDOL-6725
INDIGO

Care and Cleaning Guide**



We recommend cleaning at least once a week to extend the lifespan of the upholstery, which will prevent dirt and contamination buildup and permanent staining. In the event of a spill, wipe off any excess right away with a dry white cloth or fabric, but careful not to spread to remaining surface.



Clean the whole surface in a circular motion using liquid hand soap (pH neutral) and water (1 part soap to 9 parts water). Check the Approved Cleaners guide for recommended cleaning products. Wipe with a clean damp cloth to get rid of any excess soap. Repeat as needed and then let dry.



If there is any buildup that cannot be removed with soapy water, a mixture of 1 part isopropyl alcohol to 9 parts water can be used as a last resort. (Remember, using alcohol on a regular basis can affect the properties of the product).



Once a month, you can use a soft-bristle brush for a deeper cleaning. Remember, light colors need more care, more often.

Note: The cleaning products recommended were used in a laboratory setting. Spradling Group® has no relationship with the manufacturers of those cleaning products.

For Color Transfer

Certain clothing and accessory dyes (such as those used on denim jeans) may migrate to lighter colors. This phenomenon is increased by humidity and temperature and is irreversible. Please check compatibility when using this product in combination with painted or varnished surfaces.

Disinfectants

In addition to cleaning, healthcare facilities maintain disinfecting regimens to reduce the spread of infections. There is a wide variety of available biocides that include bleaches, peroxides and quaternary ammonium products, among others. They should always be used at the recommended dilution, never in concentrated form. To prolong the life of coated fabrics, the disinfectants should be rinsed off after each use. It should be noted that misuse of disinfectants is the major source of surface deterioration. Spradling International, Inc.® continually evaluates cleaners/disinfectants, and a list of those tested can be found on our website.

Abrasion test results exceeding ACT Performance Guidelines are not an indicator of product lifespan. Multiple factors affect fabric durability and appearance retention.

PBG+®, PERMAGUARD® and PERMABLOK® are registered trademark of Spradling Holdings, Inc. Lumex® is a trademark of GF Health Products, Inc.

©2021 Spradling International, Inc.®

*This term and any corresponding data refer to the typical performance in the specific tests indicated and should not be construed to imply the behavior of this or any other material under actual fire conditions

** Care and Cleaning Guide excludes Dolce.

Please visit www.spradling.group for the Polyurethane Fabric Cleaning Guide.

GF Health Products, Inc. is an ISO 13485:2016 / MDSAP Certified Company



Composition	NEO					
	Dolce	Patriot Plus	Renaissance	Guardian	Savoy	Cassara
PVC		■	■	■	■	
PU	■					
TPE						■
100% Polyester Hi-Loft ^{2™} Backing			■		■	
Polyester / Cotton Backing		■				
Ultra Hi-Loft ^(2™) Polyester Backing				■		
100% Rayon	■					
100% Polyester						■
Weight (oz)	15	34	32	30	30	22
Roll Size (yd)	30	30	30	30	30	30
Roll Width (inch)	54	54	54	54	54	54

Codes*

	DOL	PAT	REN	GUA	SAV	CAS
NFPA 260- Cover Fabric - Class I	■	■	■	■	■	■
UFAC Fabric - Class 1	■	■	■	■	■	■
CAL TB 117-2013	■	■	■	■	■	■
FMVSS 302	■	■				■

Finishes and Treatments



	DOL	PAT	REN	GUA	SAV	CAS
Antibacterial Protection (1,000 hrs)				■	■	
AATCC TM 16-3 / NTC 1479 / CFFA-2a - Blue Wool (1,000 hrs)		■	■	■	■	■
QUV Stabilized Pigments (650 hrs)	■					
Abrasion - CFFA-1 ASTM D-4157-02	100k	100k	100k	100k	100k	100k
Wyzenbeek Cotton Duck	#10	#10	#10	#10	#10	#10
Cold Crack	-10°F	-20°F	-20°F	-10°F	-10°F	-10°F

Applications

	DOL	PAT	REN	GUA	SAV	CAS
Corporate Interiors Restaurant Hotel	■	■	■	■	■	■
Casino Sunroom Residential	■	■	■	■	■	■
Healthcare	■	■	■	■	■	■
Marine Interior		■	■	■		
Exterior Approved				■		



* This term and any corresponding data refer to the typical performance in the specific tests indicated and should not be construed to imply the behavior of this or any other material under actual fire conditions.

Color variations may occur due to monitor or printer settings



One Graham-Field Way | Atlanta, GA 30340
www.grahamfield.com | +1 770.368.4700



Information contained herein is subject to change without notice. The most current and complete product information can be found on our website. Some products may contain chemicals, identified by the State of California as a cause of cancer, birth defects or other reproductive harm at certain exposure levels. Under the California known as "Prop 65", certain warnings to consumers in California are required where such products are sold. The presence of such chemicals in coated fabric products, even at extremely low concentrations, can lead to disputes over Prop 65 warning obligations that are very difficult to resolve. If your company intends to introduce Spradling vinyl products into commerce in California, Spradling recommends that you take steps to confirm whether the warning requirements of California's "Prop 65" are applicable to the products in question and whether your company is complying with those warning requirements for the chemicals contained within these products.

GF1400068Rev02