

StanzMe Assembly Instructions



READ AND SAVE THESE INSTRUCTIONS

IMPORTANT SAFETY INSTRUCTIONS

CAUTION

Read Rules for Safe Operation and Instructions Carefully

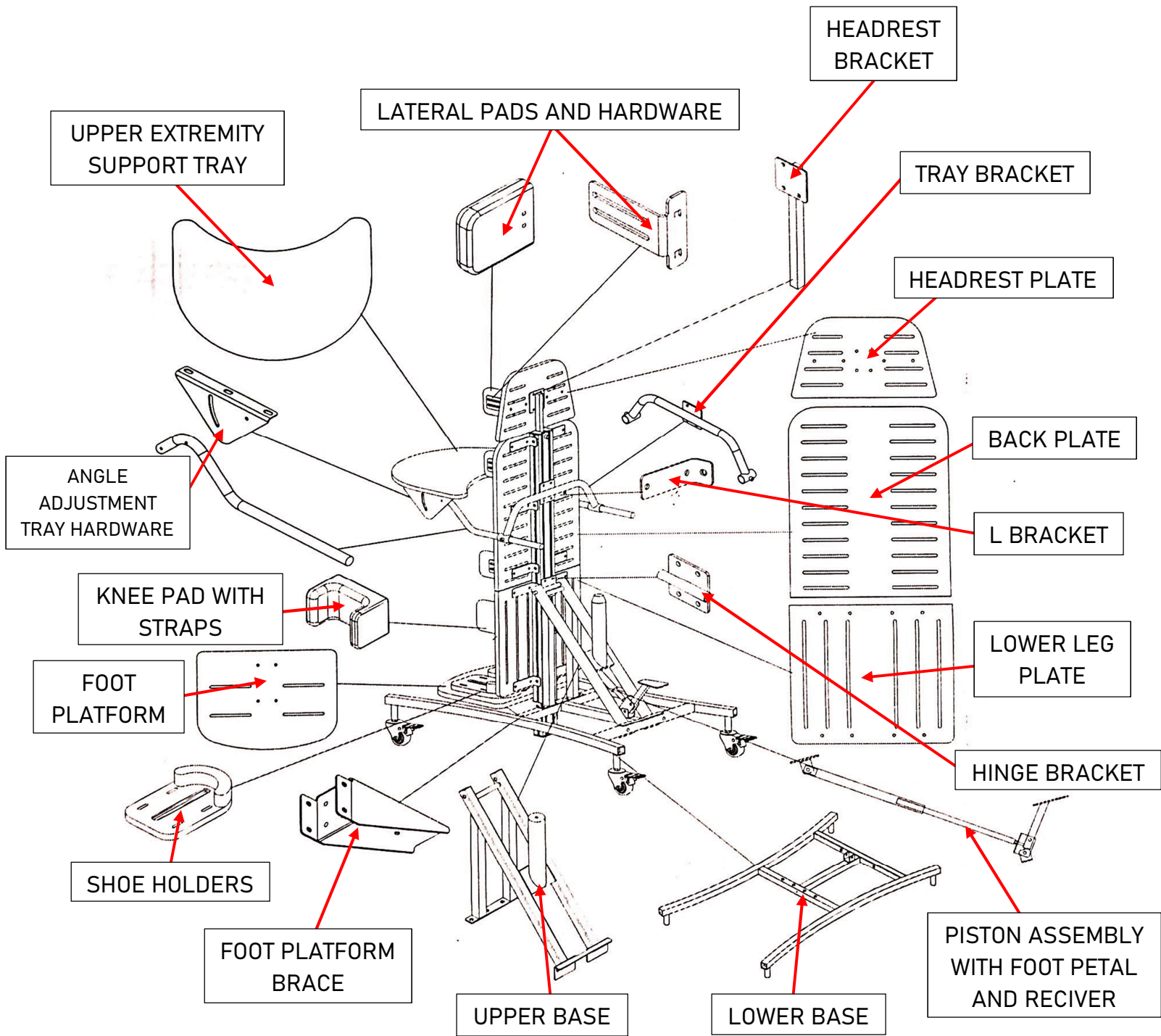
Warnings

1. Do not stand under stander while in operation.
2. Without weight, pressing the foot pedal will cause stander to quickly swing back.

RULES FOR SAFE OPERATION

1. Be sure to lock all casters when raising and lowering.
2. Use both hands to firmly support stander when lowering.
3. Make sure child is fully strapped in when raising stander.

PART FIGURE



INCLUDED IN PACKAGING

PART	QUANTITY
HEADREST PLATE	1
HEADREST BRACKET	1
BACK PLATE	1
LOWER LEG PLATE	1
FOOT PLATFORM	1
FOOT PLATFORM BRACE	1
SHOE HOLDERS WITH STRAPS	2
UPPER EXTREMITY SUPPORT TRAY	1
ANGLE ADJUSTMENT TRAY HARDWARE	2
TRAY BRACKET	1
HINGE BRACKET	1
PISTON	1
PISTON RECIVER HARDWARE	1
CENTRAL SUPPORT BAR	1
UPPER BASE	1
LOWER BASE	1
CASTERS	4
FOOT PETAL ASSEMBLY	1
L BRACKETS	10
BOLT WITH NUT ASSEMBLY <i>Note: Use Newly Provided Bolt and Nut</i>	1
BACKREST PAD	1
HEADREST PAD	1
LATERAL TRUNK AND HEAD PADS	4
LATERAL HIP PADS <i>NOTE: LARGER PADS</i>	2
KNEE PAD WITH STRAPS	2
HARNESS	1
ASSEMBLY PRINTOUT	1

WITHIN HARDWARE BAG	QUANTITY
WRENCH	3
ALLEN KEY	2
FOOT PETAL NUT AND BOLT	1

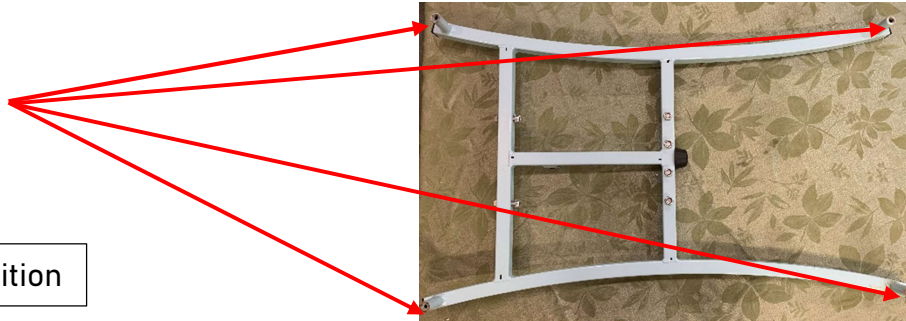
ASSEMBLY INSTRUCTIONS

STEP 1 – ATTACHING CASTERS TO LOWER BASE

- Lock all 4 casters and then insert to lower base assembly.

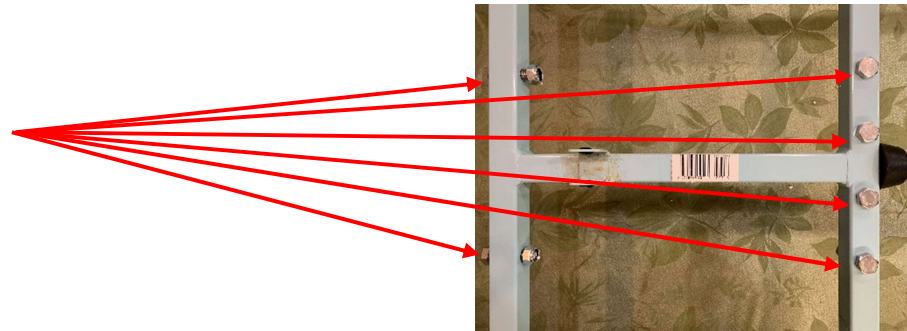


Locked Caster Position



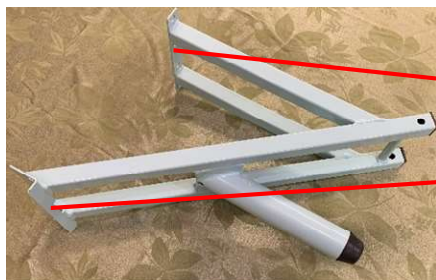
STEP 2 – REMOVING 6 BOLTS AND NUTS

- 2 wrenches are provided in the hardware bag to open the 6 nuts and bolts.

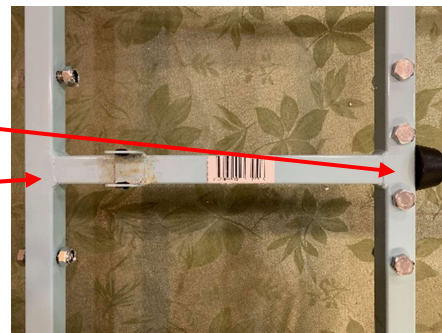


STEP 3 – ATTACH UPPER BASE

- Attach upper base to frame using the 6 nuts and bolts from STEP 2.
- Upper base sits vertically above lower base.

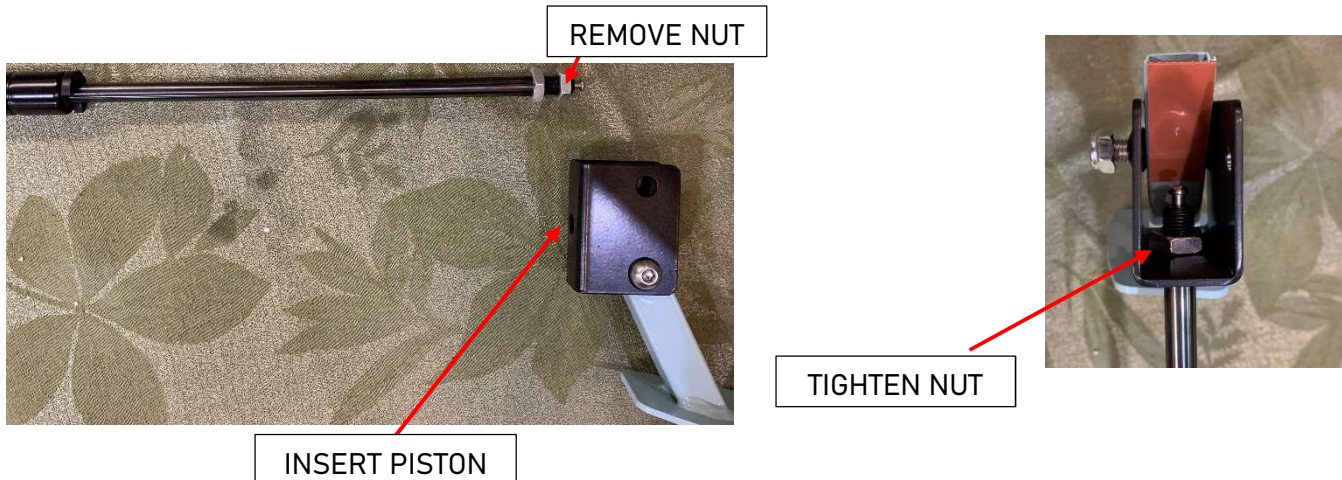


TIGHTEN BOLTS



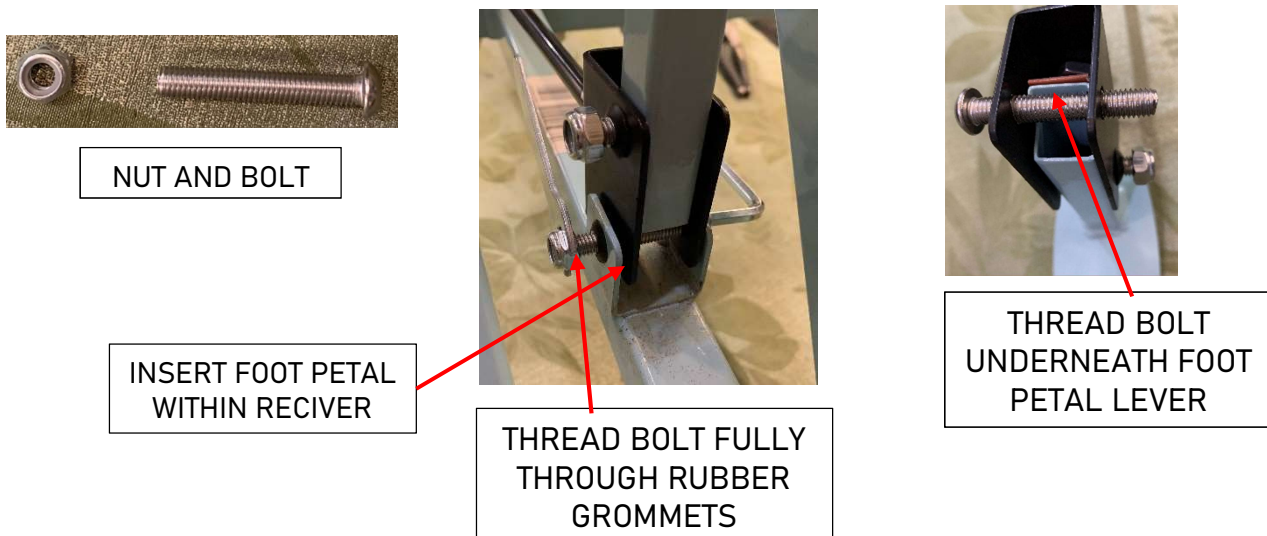
STEP 4 – PISTON AND FOOT PETAL ASSEMBLY

1. Remove one of the two nuts on the piston rod.
2. Insert end of piston rod into foot petal bracket.
3. Reuse the removed nut and tighten the piston firmly to the bracket.



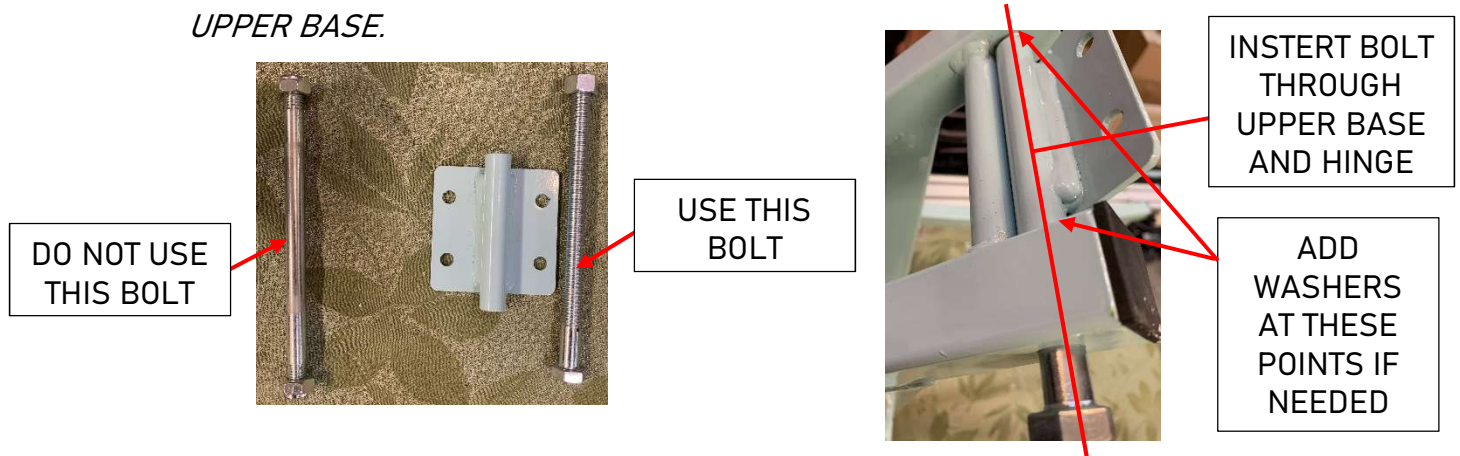
STEP 5 – ATTACHING PISTON ASSEMBLY TO BASE

1. Use the nut and bolt provide in hardware bag.
2. Slide foot petal bracket to receiving end on lower base.
3. Thread bolt fully through receiver and bracket.
4. *NOTE: MAKE SURE BOLT THREADS THROUGH UNDERNEATH FOOT PETAL.*
5. *NOTE: MAKE SURE PISTON IS FACING TOWARD FRONT OF STANDER.*



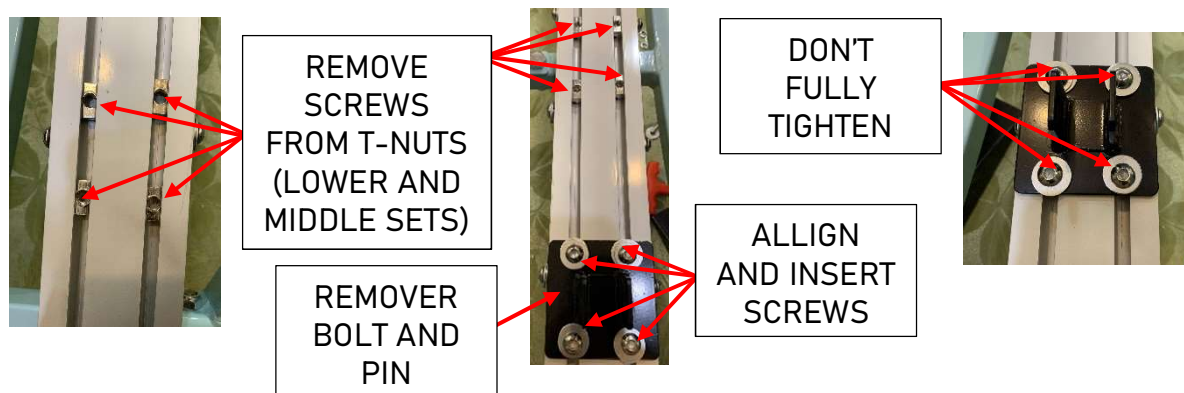
STEP 6 – ATTACHING HINGE BRACKET

1. Remove inserted bolt in upper base.
2. *NOTE: DO NOT USE BOLT ALREADY INSERTED IN UPPER BASE.*
3. Slide in newly provided bolt, [right to left (standing at the rear of the stander)] into the upper base then into the hinge bracket.
4. Tighten nut on opposite end.
5. *NOTE: IF HINGE WOBBLES IN ASSEMBLY ADD WASHERS BETWEEN HINGE AND UPPER BASE.*



STEP 7 – ATTACHING PISTON RECIVER TO CENTRAL SUPPORT BAR

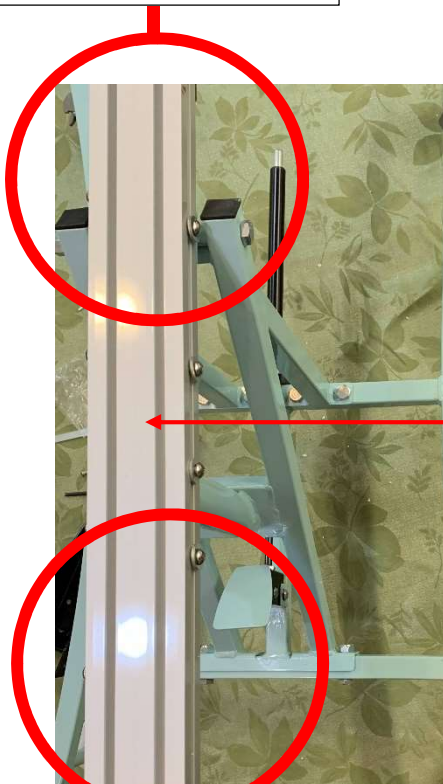
1. Remove middle and lower set of 4 screws on rear facing side central support bar.
 - a. **IDENTIFIERS:**
 - b. The rear facing side of the support bar will have the knob at the top.
 - c. 3 sets of 4 screws will be on the rear facing side, remove the middle and lowest set.
2. Remove bolt and pin from piston receiver and set aside for now.
3. Align 4 t-nuts with holes on piston receiver and insert screws.
 - a. *NOTE: Start screws by hand.*
4. Don't fully tighten bracket to central support bar.



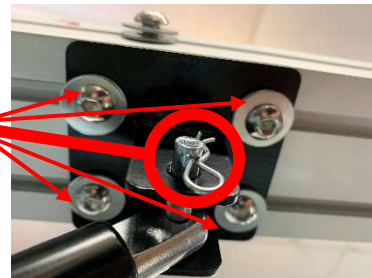
STEP 8 – CONNECTING CENTRAL SUPPORT BAR

1. Place central support bar on top of the rubber bumper on the upper base and hinge bracket.
 - a. Make sure front face of central support bar is facing the ceiling.
 - b. Make sure top of central support bar is above rear of stander.
 - c. Make sure bottom of central support bar is at the front of the stander.
2. From underneath the stander, align piston receiver with piston and insert bolt and pin from earlier step.
 - a. Tighten all 4 screws.
3. Align middle t-nuts with hinge bracket and insert screws.
 - a. Tighten all 4 screws.
 - b. *NOTE: Start screws by hand.*
4. Test to see if bar can be raised to upright position without bottom of central support bar hitting the floor.
 - a. If central support bar hits floor, slide up bar and retighten screws.

BOTTOM OF CENTRAL
SUPPORT BAR /
FRONT OF STANDER

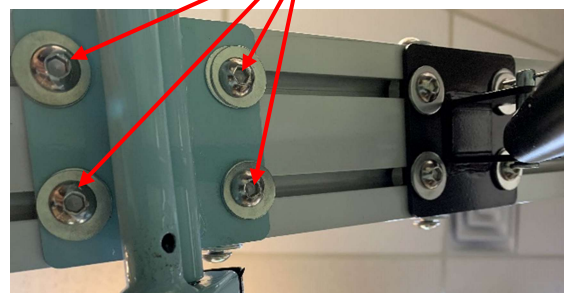


INSERT BOLT
AND PIN /
TIGHTEN ALL
SCREWS



FRONT FACE OF
CENTRAL
SUPPORT BAR

ALIGN AND
TIGHTEN HINGE
BRACKET

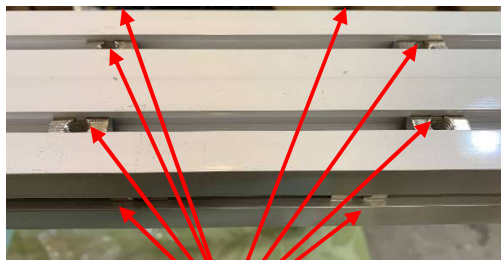


TOP OF CENTRAL
SUPPORT BAR /
REAR OF STANDER

STEP 9 – ATTACHING FOOT PLATFORM BRACE

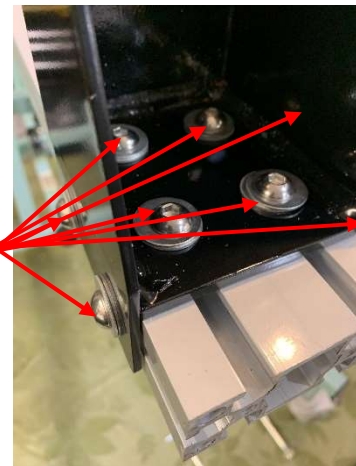
1. Remove 4 screws on front face of central support bar and remove 2 screws on each side of the central support bar.
2. Align t-nuts with holes of foot platform brace.
3. Insert screws and tighten.

a. NOTE: START SCREWS BY HAND



REMOVE SCREWS

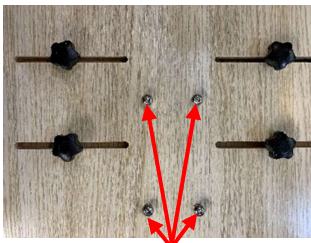
ALIGN AND
TIGHTEN SCREWS



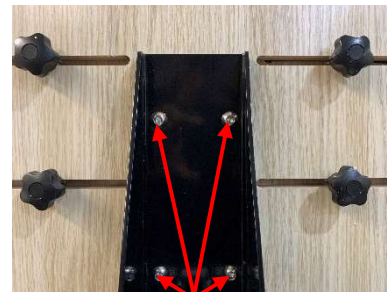
STEP 10 – ATTACHING FOOT PLATFORM

1. Remove 4 screws on the bottom on foot platform.
2. Align the foot platform and brace and insert 4 screws.

a. NOTE: START SCREWS BY HAND



REMOVE 4 SCREWS

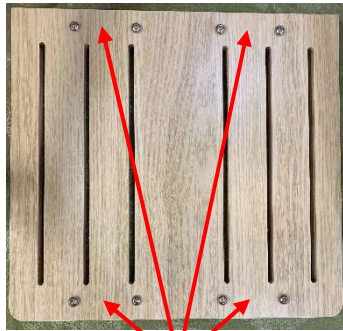


ALIGN AND TIGHTEN

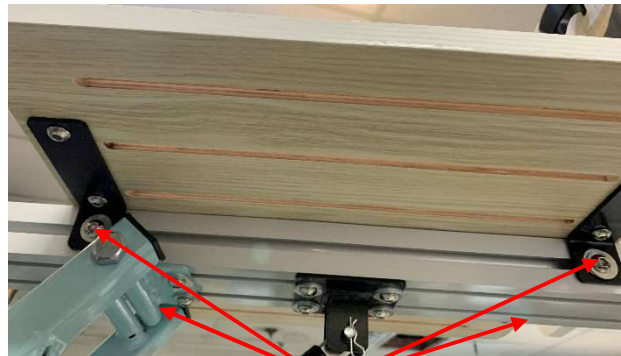
STEP 11 – ATTACHING LOWER LEG PLATE

1. Remove 8 screws and attach 4 L brackets to back of the lower leg plate.
2. Remove 4 screws from the sides of the central support bar.
3. Place lower leg plate on central support bar and align t-nuts with L brackets.
4. Insert screws and tighten.

a. *NOTE: START SCREWS BY HAND*



PLACE 4 L BRACKETS AT THESE POINTS

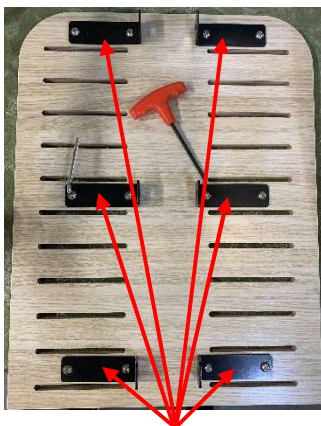


ALIGN L BRACKETS WITH T-NUTS AND INSERT SCREWS

STEP 12 – ATTACHING BACK PLATE

1. Remove 12 screws and attach 6 L brackets to back of the lower leg plate.
2. Remove 6 screws from the sides of the central support bar.
3. Place lower leg plate on central support bar and align t-nuts with L brackets.
4. Insert screws and tighten.

a. *NOTE: START SCREWS BY HAND*



PLACE 6 L BRACKETS AT THESE POINTS



ALIGN L BRACKETS WITH T-NUTS AND INSERT SCREWS

STEP 13 – ATTACHING TRAY BRACKET

1. Remove 4 screws on rear of central support bar.
2. Align tray bracket and t-nuts, proceed to insert screws.
 - a. *NOTE: START SCREWS BY HAND*



STEP 14 – SUPPORT TRAY ASSEMBLY

1. Remove 6 screws on the bottom of the tray.
2. Align angle adjustment tray hardware with holes.
 - a. *NOTE: ADJUSTMENT HANDLE IS FACING OUTSIDE*
3. Insert screws and tighten.
 - a. *NOTE: START SCREWS BY HAND*



STEP 15 – INSTALLING KNEE PADS WITH STRAPS

1. Remove knobs on the rear of the pads.
2. Align knobs through straps and lower leg plate into the threads of the pad.



STEP 16 – ATTACHING LATERAL HIP AND TRUNK PADS

1. Remove knobs on the hip and trunk pads.
2. Align and insert pads through cut outs on the back plate.
3. Tighten knobs.



ALIGN AND INSTALL LATERAL TRUNK PADS

ALIGN AND INSTALL LATERAL HIP PADS

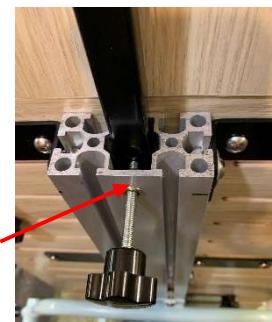
STEP 17 – ATTACHING HEADREST

1. Remove 4 screws on rear of headrest plate.
2. Align and install headrest bracket.
3. Slide headrest into top of central support bar and tighten the knob to lock in place.



ALIGN AND INSTALL

INSERT HEADREST
BRACKET AND
TIGHTEN KNOB



STEP 18 –VELCRO ATTACHING PADS

1. Remove cover tape on headrest and backrest pads.
2. Align and place pads on headrest plate and backplate.



REMOVE TAPE AND
PLACE PADS AT
INDICATED LOCATION



STEP 19 – ATTACHING HARNESS

1. Install harness by threading ends through slits on back plate and back to the clip.



THREAD THROUGH
BACKPLATE AND
CLIPS

STEP 20 – INSERT SUPPORT TRAY INTO TRAY BRACKET



INSERT TRAY INTO
BRACKET AND
TIGHTEN KNOB

STEP 21 – CLEANING IF REQUIRED

- If any hardware and pads have white foam marks left on it please use a rag and adhesive remover to clean thoroughly.



APPLY ON RAG AND
CLEAN



SERVICE AND SUPPORT

❖ Address

- 16 Signal Hill Rd Brookfield, CT 06804

❖ Phone

- +(888) 714-8405

❖ Email

- sales@stanzme.com