



Great Life Healthcare

PERFECT FOR PATIENTS
PERFECT FOR CAREGIVERS

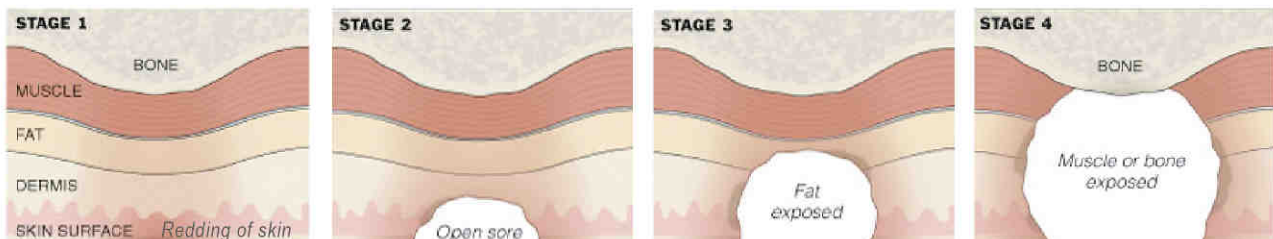
CREATING INNOVATION AND DIFFERENCE



Universal Therapy System (UTS)

Provides you, the caregiver, with peace of mind
and your patient, with world class care & comfort.

Stages of Wounds



UTS has integrated automatic weight sensing technology to provide maximal distribution of patient weight through a low pressure alternating mode and a continuous low pressure mode in one air mattress system, resulting in high levels of pressure relief to prevent and treat pressure ulcers up to stage 4.

UTS works on the principle of actively encouraging blood flow by gently increasing and decreasing pressure within the supports urface over a 10 minute cycle, resulting in the reduction of surface pressures helping to prevent tissue breakdown and encourage healing.

Master Control Unit

- Length (inflated) : 80"
- Width (inflated) : 36"
- Total height : 8"
- Mattress weight : 31 lbs
- Maximum Patient Weight : 350 lbs
- Cover Material : Nylon with PU coating finish / Two-way stretch material

Electrical Requirement

- Voltage : 115 VAC ,60HZ
- Current : 1 amp
- Power consumption : 6 W
- Noise level : 32 dB

CONTROL PENDANT

- Width : 2.1"
- Height : 1"
- Length : 7.2"
- Weight : 0.5 lbs

Universal Therapy System (UTS)



Great Life Healthcare

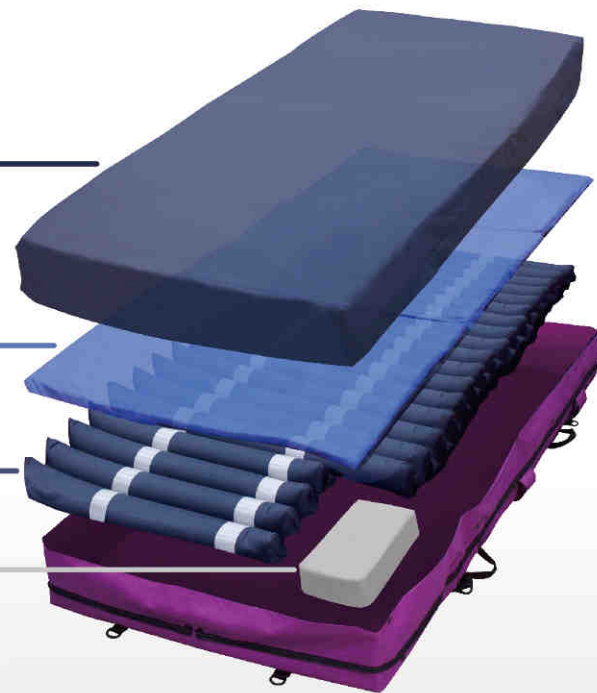
Great Life Healthcare is your partner in protection and treatment of pressure ulcer

Fully enclosed with easy cleaned and comfortable nylon with PU coating finish cover. This cover is made of waterproof and moisture vapour permeable material.

Removable foam layer that can be placed under top cover for extra comfort or store in compartment underneath the air cells.

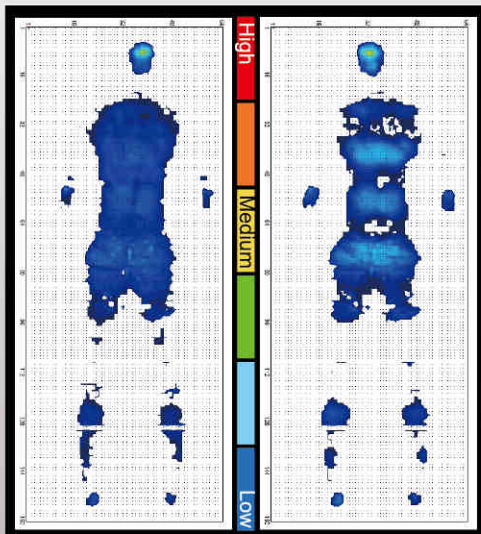
Special heel zone to improve pressure relief in this high risk area.

Integrated automatic weight sensing maximum weight redistribution.



Universal Therapy System (UTS)

provides lower pressure by redistributing patient's pressure over a greater area than a standard mattress

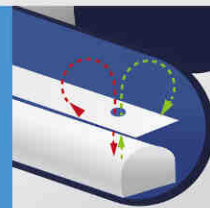


Static mode mmHg Alternating mode
80kg male subject tested

Value-added features:



Rotating CPR Valve release system deflates the system within 20 seconds with less accidental deflations



Foam in cell design provides a safe and sound protection during power outages and easier patient exits



Cable management keeps electrical cables off the floor



Integrated slimline pump design is unobstructive with no hoses to tangle



UTS is designed with alternating pressure and static pressure therapy modes to prevent tissue breakdown and encourage healing.

• Manual selection of comfort setting

• Function status display

• Alarm display



• Power-On indicator

• Continuous pressure in static mode

• Automatic weight detection mode switch

• Handset lock/unlock and alarm mute indicator