



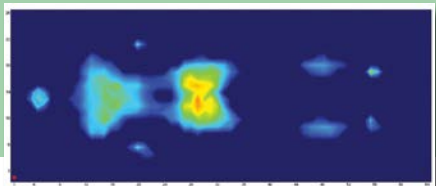
S600 SERIES

A Graham-Field Family Brand

- Protection for higher risk patients with pressure ulcers and high-risk heels
- Provides pressure reduction and redistribution
- Firm side perimeter construction with optional 3" raised perimeter bolsters (RB) featuring ingress-egress cutout
- Three-Layer construction with heel slope
- Fluid-resistant, low friction, anti-microbial top cover with vinyl bottom cover and full zipper
- Designed to meet the requirements of HCPCS Code E0184
- Maximum Weight Capacity 450 lb (500 lb for 42" wide models) - EVENLY DISTRIBUTED

Warranty:

Mattress: Five (5) year limited warranty
Cover: One (1) year limited warranty



Pressure Interface Pressure Mapping



**This product is not made with natural rubber latex*

Dimensions	With Firm Side Bolsters	With 3" Raised Firm Side Bolsters
35" x 76" x 6"	S600B-3576	S600RB-3576
35" x 80" x 6"	S600B-3580	S600RB-3580
35" x 84" x 6"	S600B-3584	S600RB-3584
42" x 76" x 7"	S600B-4276	S600RB-4276
42" x 80" x 7"	S600B-4280	S600RB-4280
42" x 84" x 7"	S600B-4284	S600RB-4284



SIMMONS Clinical Care products manufactured by GF Health Products, Inc. under license from the trademark owner, Dreamwell, Ltd., a subsidiary of Simmons Bedding Company, Atlanta, Georgia. SIMMONS is a trademark of Dreamwell, Ltd. a subsidiary of Simmons Bedding Company. © 2016 Dreamwell, Ltd. All rights reserved.



www.grahamfield.com



© 2016 GF Health Products, Inc.
Atlanta, GA 30360 All rights reserved.
GF1200141RevB16