

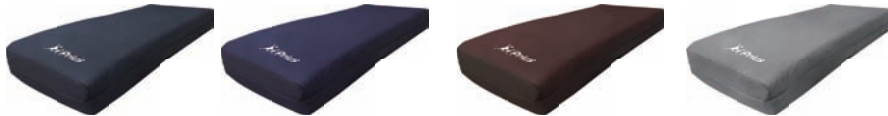
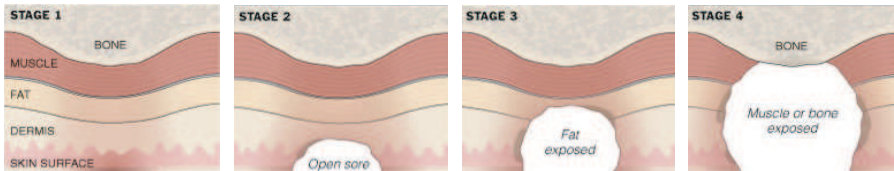
PERFECT FOR PATIENTS  
PERFECT FOR CAREGIVERS



CREATING INNOVATION AND DIFFERENCE

# Enhance DX

Enhance DX Mattress System is a low to medium risk system for patients who are at risk of developing Pressure Ulcers according to your sound clinical judgment. Enhance DX can also be used for patients who have an existing stage 1, 2 and 3 Pressure Ulcer, in conjunction with your hospital's policy on pressure area management.



Various top covers are designed and available to satisfy your individual requirement in terms of therapy, prevention and patient comfort.

#### Master Control Unit

- Dimension: (L)10.1"x (W)4.5"x (H)8.3"
- Weight: 5.1 lbs
- Rating Voltage: 110-120 volts
- Max Current: 0.1A max.
- Rating Frequency: 60Hz
- Cycle Time: 10 mins
- 2 in 1 alternation
- Min/Max Pressure: 12~47 mmHg +/- 5 mmHg
- Flow-rate: ≥ 5 l/min
- Protection Type: Class I, Type BF
- Low Pressure Alarm: Visual / Audio
- Static Function

#### Mattress Replacement

- Model No: Enhance DX
- Dimension: (L)80"x (W)36"x (H)8"
- Weight: 20 lbs
- Weight Capacity: 500 lbs
- Cell Material: Black Nylon with PU Coating
- Cell Number: 18 cells
- Cover Material: Blue Nylon with PU coating finish
- Base Material: Black Polyester with PVC Coating
- CPR Quick Release System
- Cell in cell design

Prius Healthcare USA Toll Free: 877-446-4925  
4029 Tampa Rd Suite 4000C Oldsmar FL, 34677  
Tel: 813-854-5464 email: kfarrell@priushcusa.com



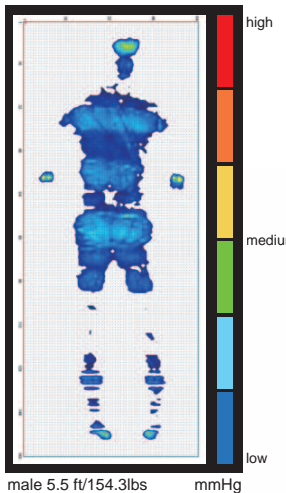
# Enhance DX



## Enhance DX

provides you, the caregiver, with peace of mind and your patient, with world class care & comfort

Perfect for patients and caregivers



**PRESSURE MAPPING**  
 Enhance DX provides constant low pressure by redistributing the patient's pressure over a greater area than a standard mattress.

- The Enhance DX employs 8" air bladders with cell in cell design (4.5" of therapy, 3.5" of static air), to provide therapeutic alternating pressure and also allow the mattress to stay inflated in a power outage.

Enhance DX is your partner in protection and treatment of pressure ulcer

Low slip base cover is a plus to keep the mattress in place on the bed

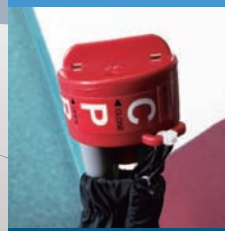


- Durable woven polyester bottom cover with PVC lining for infection control.
- The Enhance DX replacement mattress can accommodate patient weights up to 500 lbs
- Low friction, low shear cover.



Cable management keeps electrical cables off the floor

Nylon woven fabric with PU coating finish



CPR quick release system deflates the system within 20 seconds



The electronic control provides 8 adjustable levels of comfort depending on the patient's therapy requirement.



- 2-in-1 alternating air cycle ensures the maximum protection.
- The power failure alarm is triggered during a power outage.
- The Low-Pressure Alarm is triggered when the air pressure of the mattress is lower than the default setup.

Slimline pump design is unobstructive



Hanging bracket fits on all type of beds